

SECTION 3 CHARTS AND DIAGRAMS

NOTES OF SCHEMATIC DIAGRAM

Safety precautions
The Components identified by the symbol are critical for safety. For continued safety, replace safety critical components only with manufacturer's recommended parts.

1. Units of components on the schematic diagram

Unless otherwise specified.

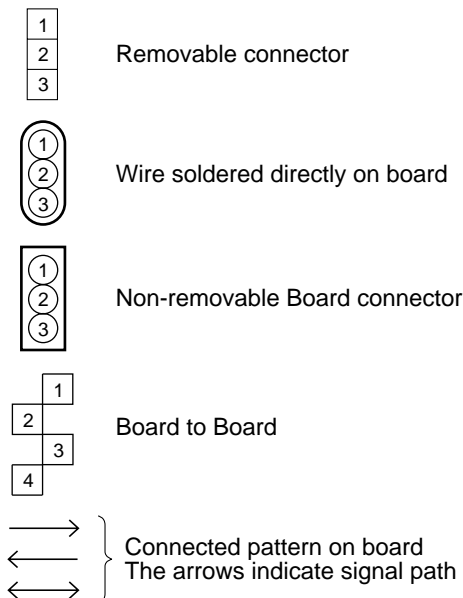
- 1) All resistance values are in ohm, 1/6 W, 1/8 W (refer to parts list).
 Chip resistors are 1/16 W.
 K: K Ω (1000 Ω), M: M Ω (1000K Ω)
- 2) All capacitance values are in μ F, (P: PF).
- 3) All inductance values are in μ H, (m: mH).
- 4) All diodes are 1SS133, MA165 or 1N4148M (refer to parts list).

2. Indications of control voltage

AUX : Active at high

$\overline{\text{AUX}}$ or AUX(L) : Active at low

3. Interpreting Connector indications

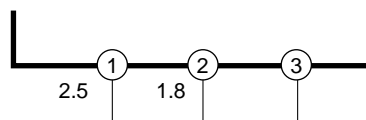


4. Voltage measurement

- 1) Video circuits
 Voltage are DC-measured (reference to ground) with a voltmeter by supplying the color bar signal during print screen mode.

— : Unmeasurable or unnecessary to measure

- 2) Indication on schematic diagram
 Voltage indications on the schematic diagram are as shown below.

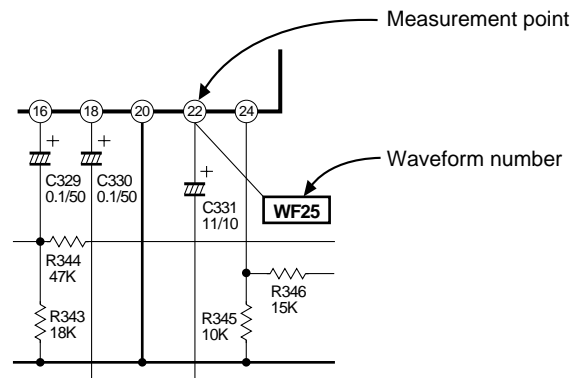


Note: If the voltages are not indicated on the schematic diagram, refer to the voltage charts.

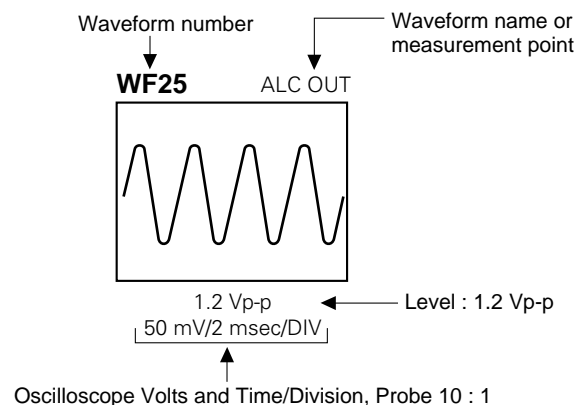
5. Waveform measurement

- 1) Video circuits
 Waveforms are measured (reference to ground) with a color bar signal during print screen mode.

- 2) Indication on schematic diagram
 Waveform indications on the schematic diagram are as shown below.

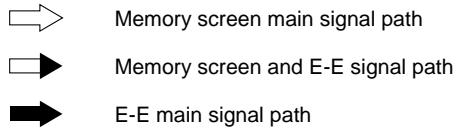


3) Waveform indications

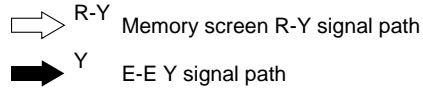


6. Signal path Symbols

The arrows indicate the signal path as follows.

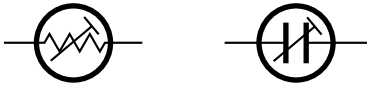


(Example)



7. Indication of the parts for adjustments

The parts for the adjustments are surrounded with the circle as shown below.



8. Indication of the parts not mounted on the circuit board

"OPEN" is indicated by the parts not mounted on the circuit board.



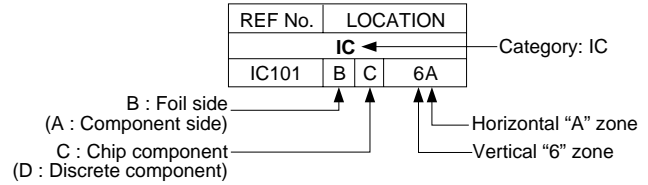
CIRCUIT BOARD NOTES

1. Foil and Component sides

- 1) Foil side (B side) :
Parts on the foil side seen from foil face (pattern face) are indicated.
- 2) Component side (A side) :
Parts on the component side seen from component face (parts face) indicated.

2. Parts location guides

Parts location are indicated by guide scale on the circuit board.

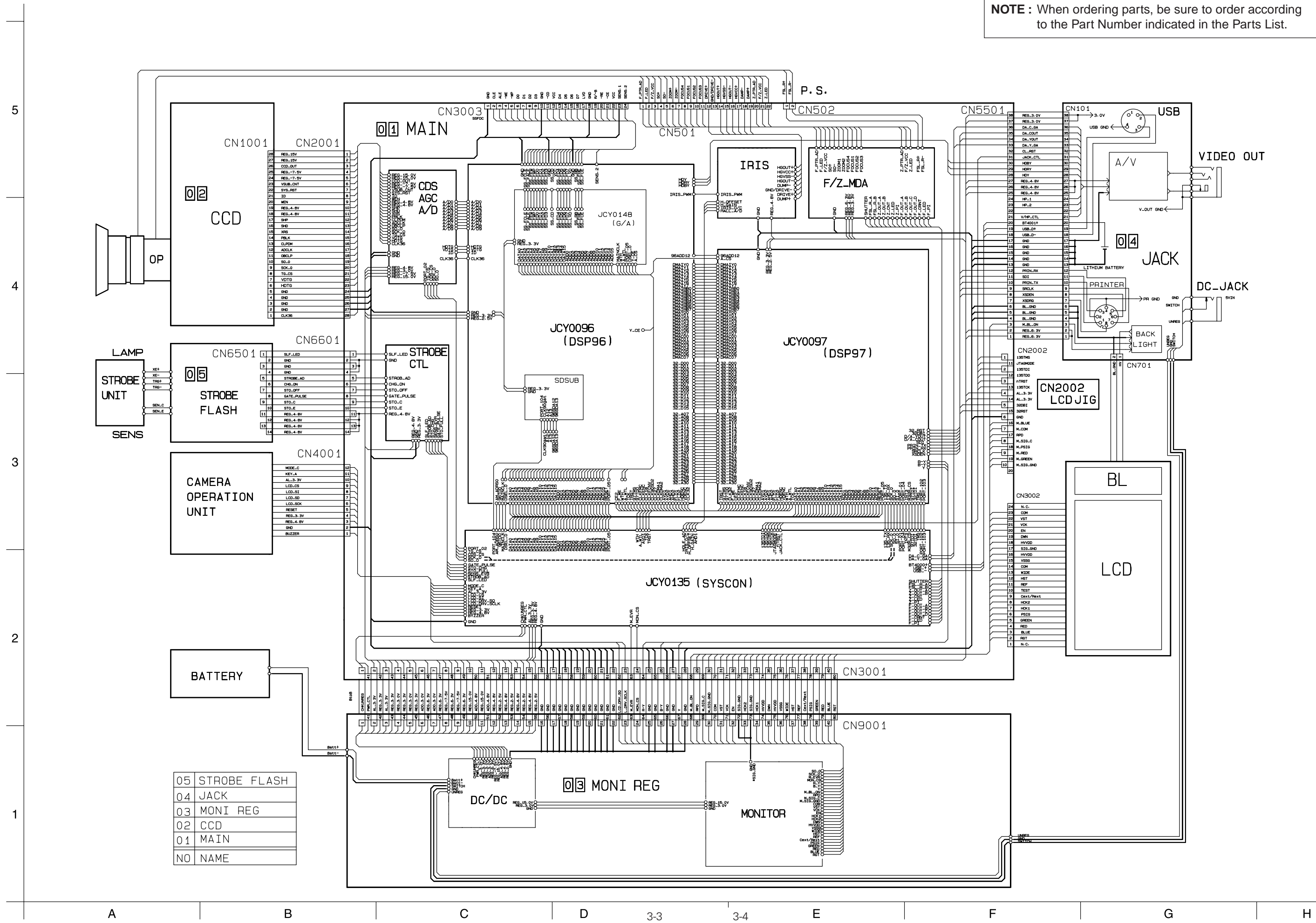


Note:

For general information in service manual, please refer to the Service Manual of GENERAL INFORMATION Edition 4 No. 82054D (January 1994).

3.1 BOARD INTERCONNECTION

NOTE : When ordering parts, be sure to order according to the Part Number indicated in the Parts List.



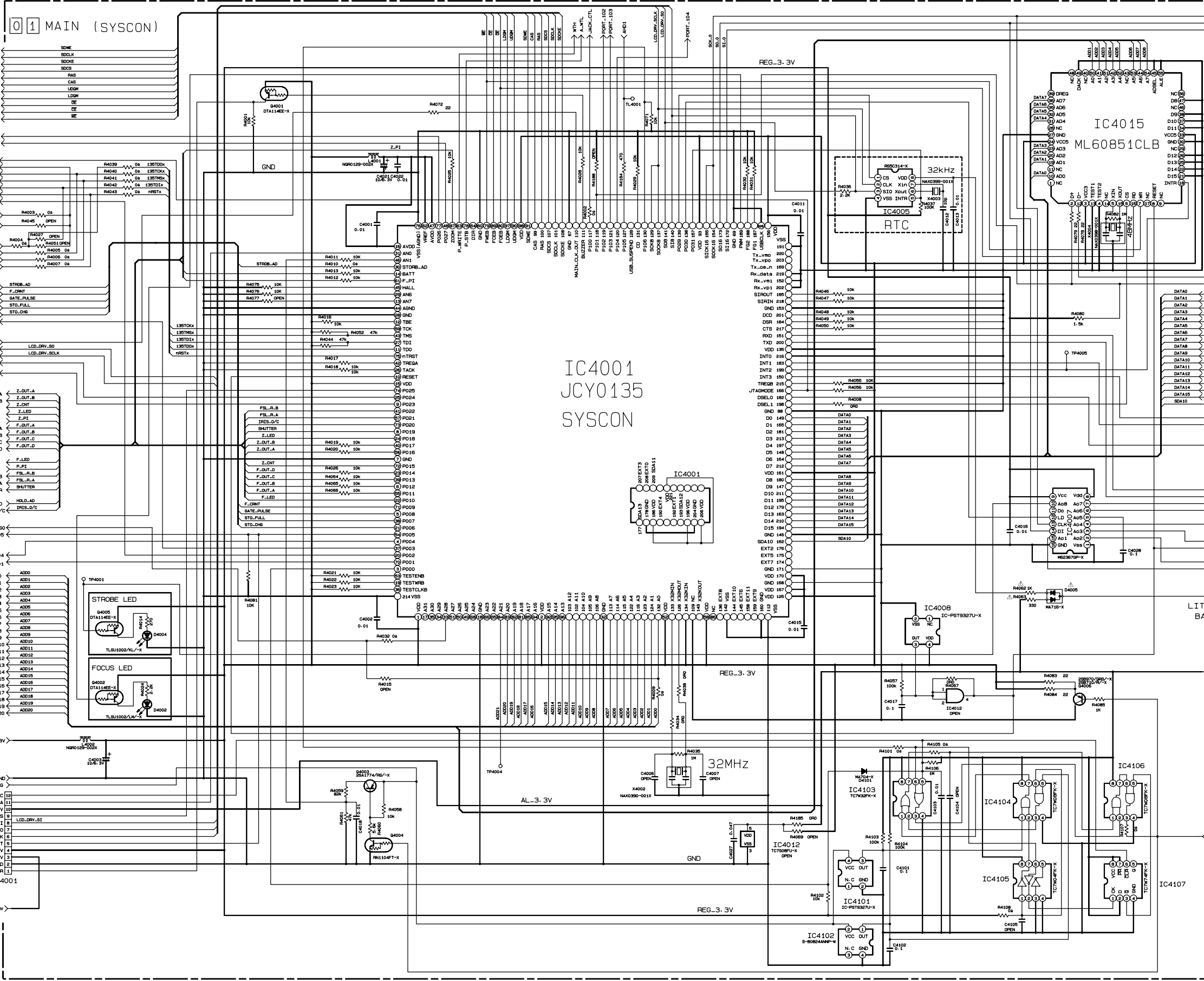
05	STROBE FLASH
04	JACK
03	MONI REG
02	CCD
01	MAIN
NO	NAME

3.2 MAIN (SYSCON) SCHEMATIC DIAGRAM

NOTE : When ordering parts, be sure to order according to the Part Number indicated in the Parts List.

5
4
3
2
1

TO DSP97 (page 3-9)
TO SD SUB (page 3-11)

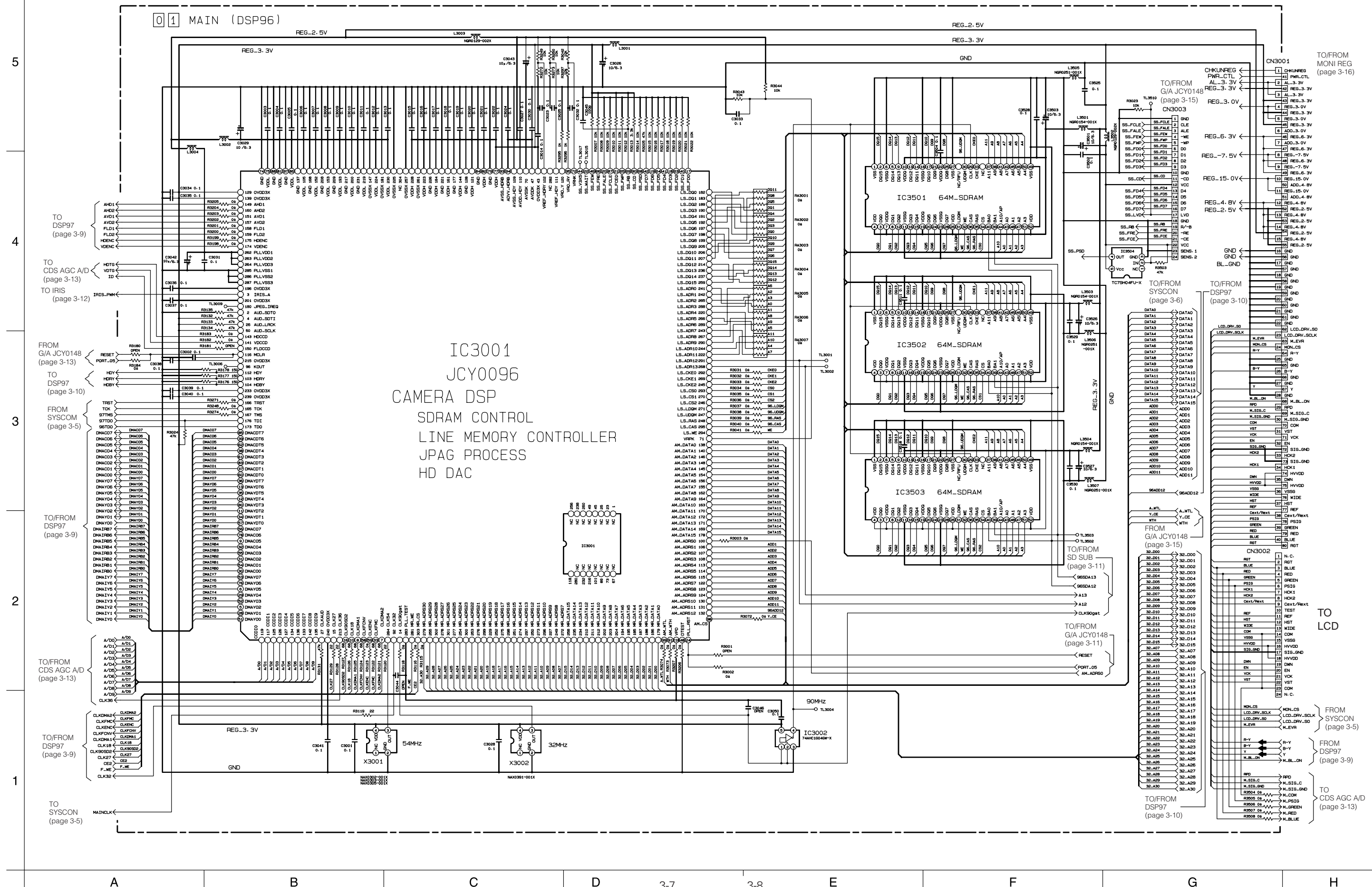


TO CDS AGC A/D (page 3-13)
TO DSP97 (page 3-9)
TO/FROM DSP96/DSP97/ARM ROM (page 3-8,9,13)
FROM G/A 148 (page 3-11)
TO DSP97 (page 3-10)
TO STROBE CONTROL (page 3-14)
TO DSP96 (page 3-14)
TO IRIS (page 3-14)
FROM DSP97 (page 3-9)
LITHIUM BATTERY
TO DSP96 (page 3-8)
FROM DC/DC (page 3-18)

A B C 3-5 3-6 E F G H

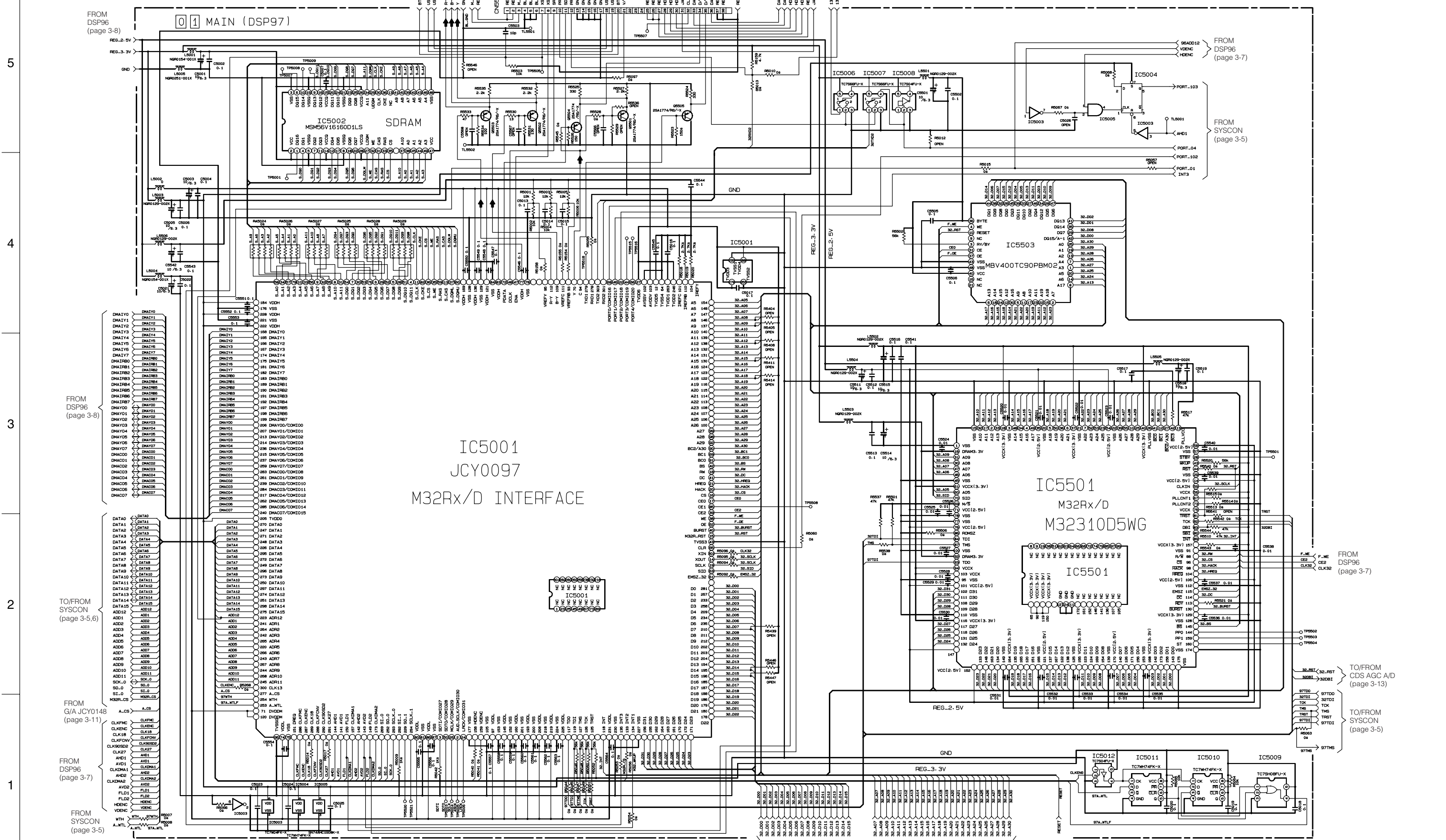
3.3 MAIN (DSP96) SCHEMATIC DIAGRAM

NOTE : When ordering parts, be sure to order according to the Part Number indicated in the Parts List.



3.4 MAIN (DSP97) SCHEMATIC DIAGRAM

NOTE : When ordering parts, be sure to order according to the Part Number indicated in the Parts List.



5

4

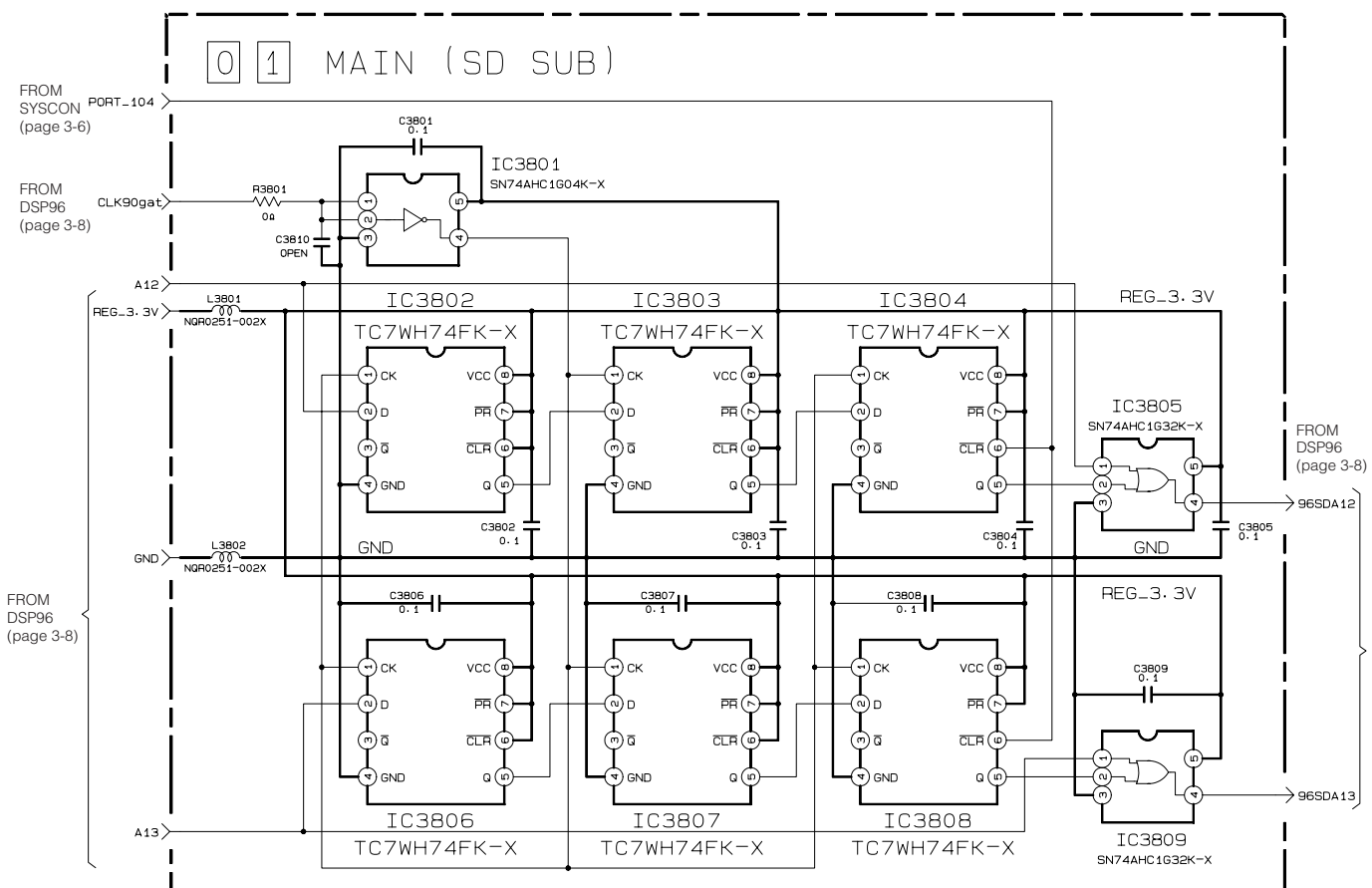
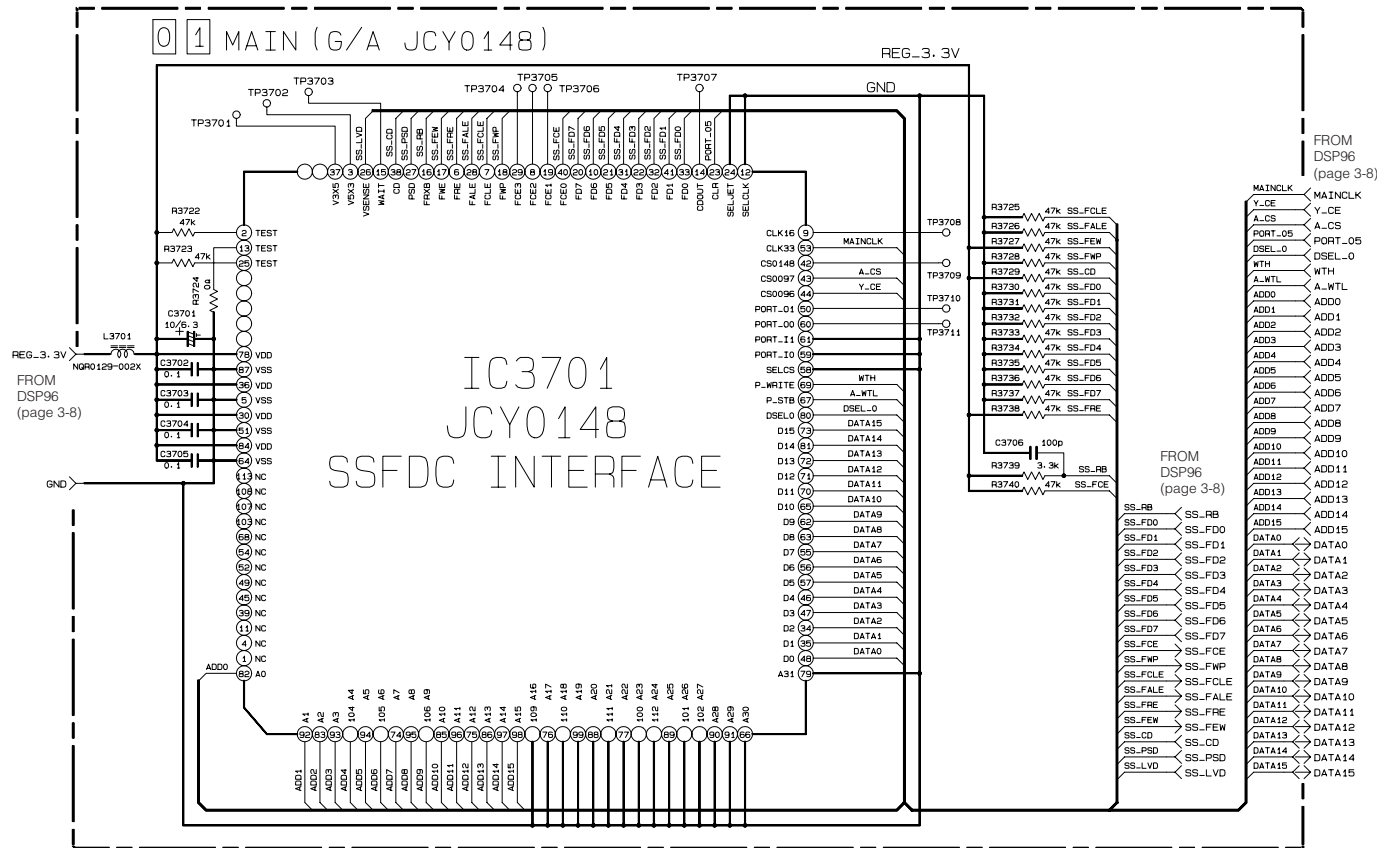
3

2

1

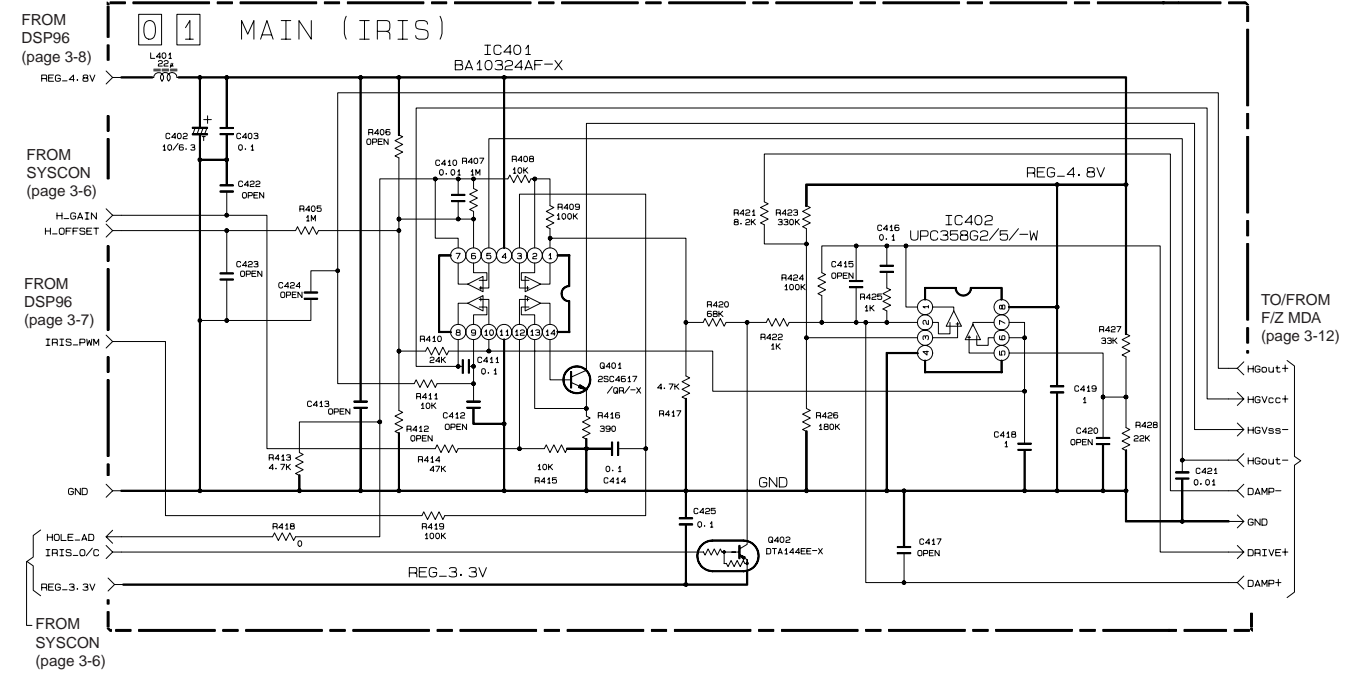
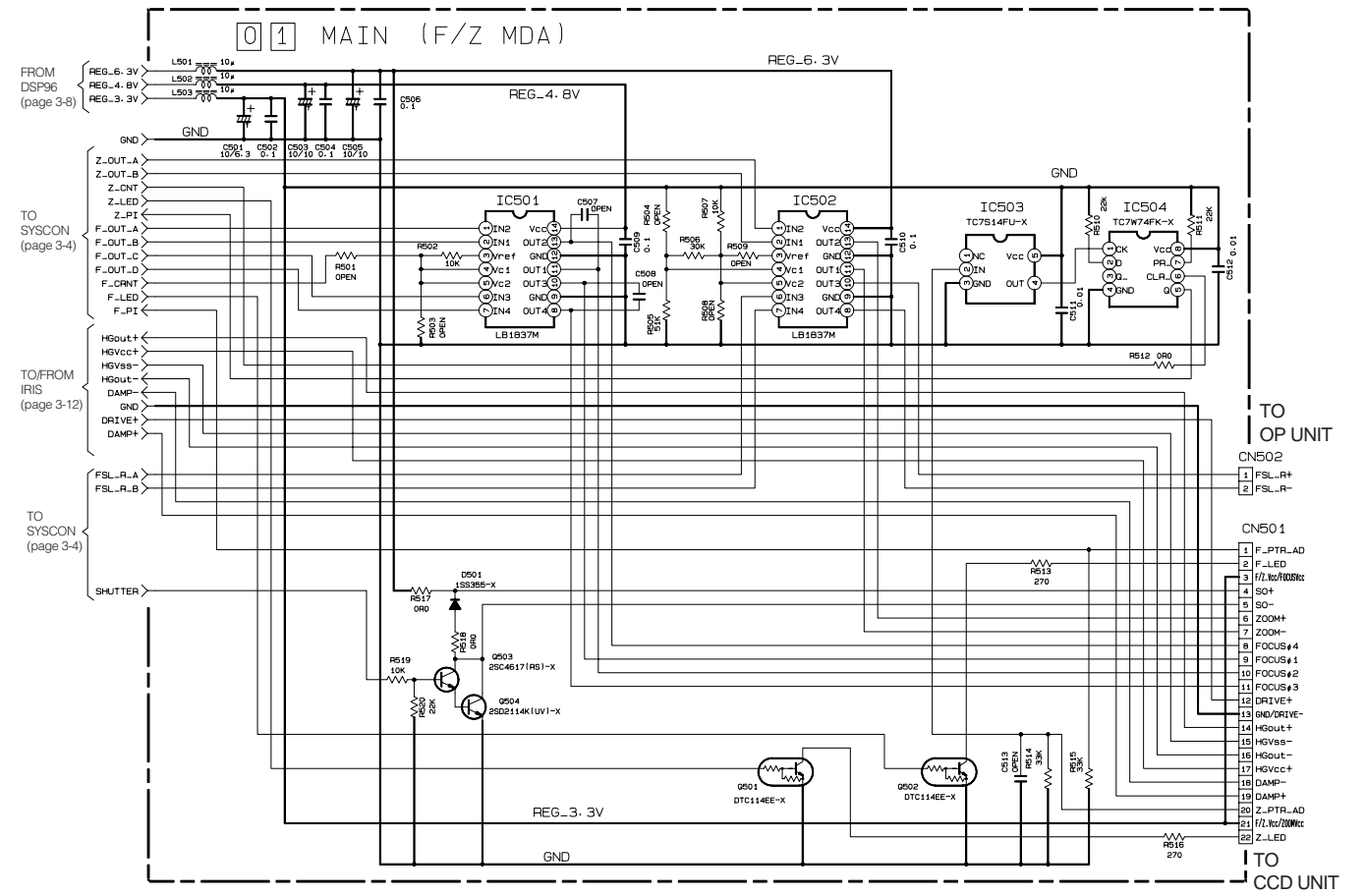
3.5 MAIN (G/A JCY0148) AND MAIN (SD SUB) SCHEMATIC DIAGRAM

NOTE : When ordering parts, be sure to order according to the Part Number indicated in the Parts List.



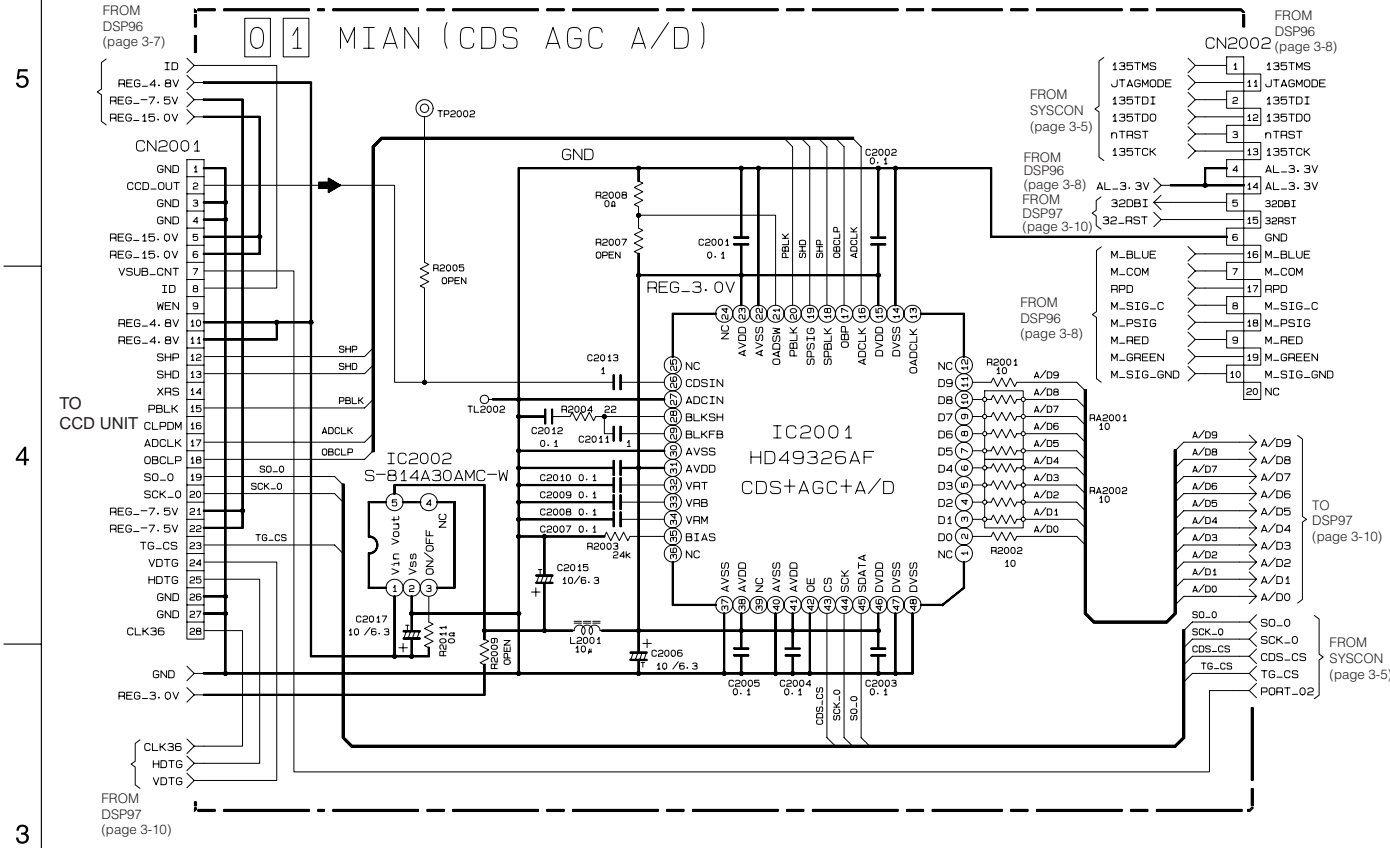
3.6 MAIN (F/Z MDA) AND MAIN (IRIS) SCHEMATIC DIAGRAMS

NOTE : When ordering parts, be sure to order according to the Part Number indicated in the Parts List.



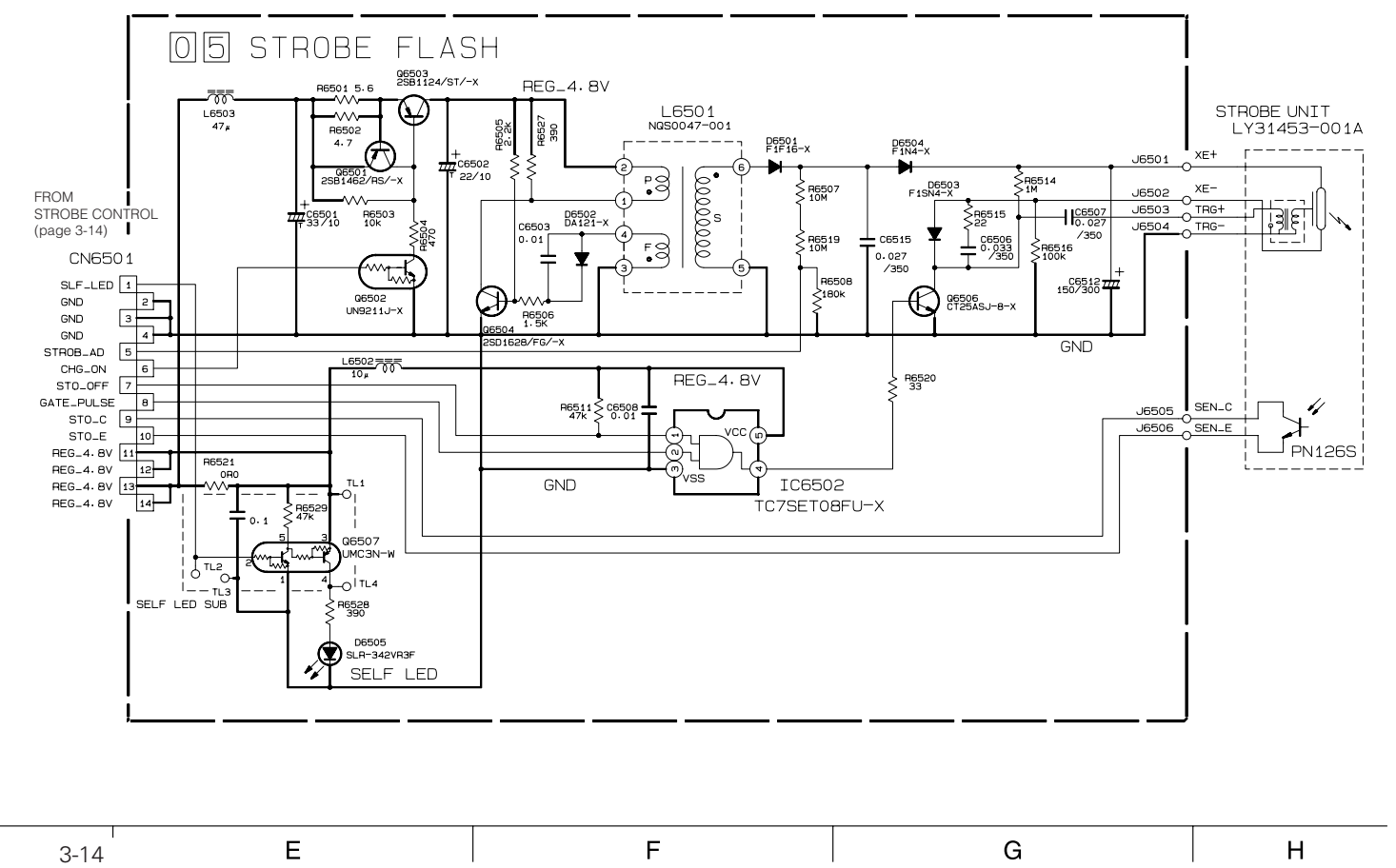
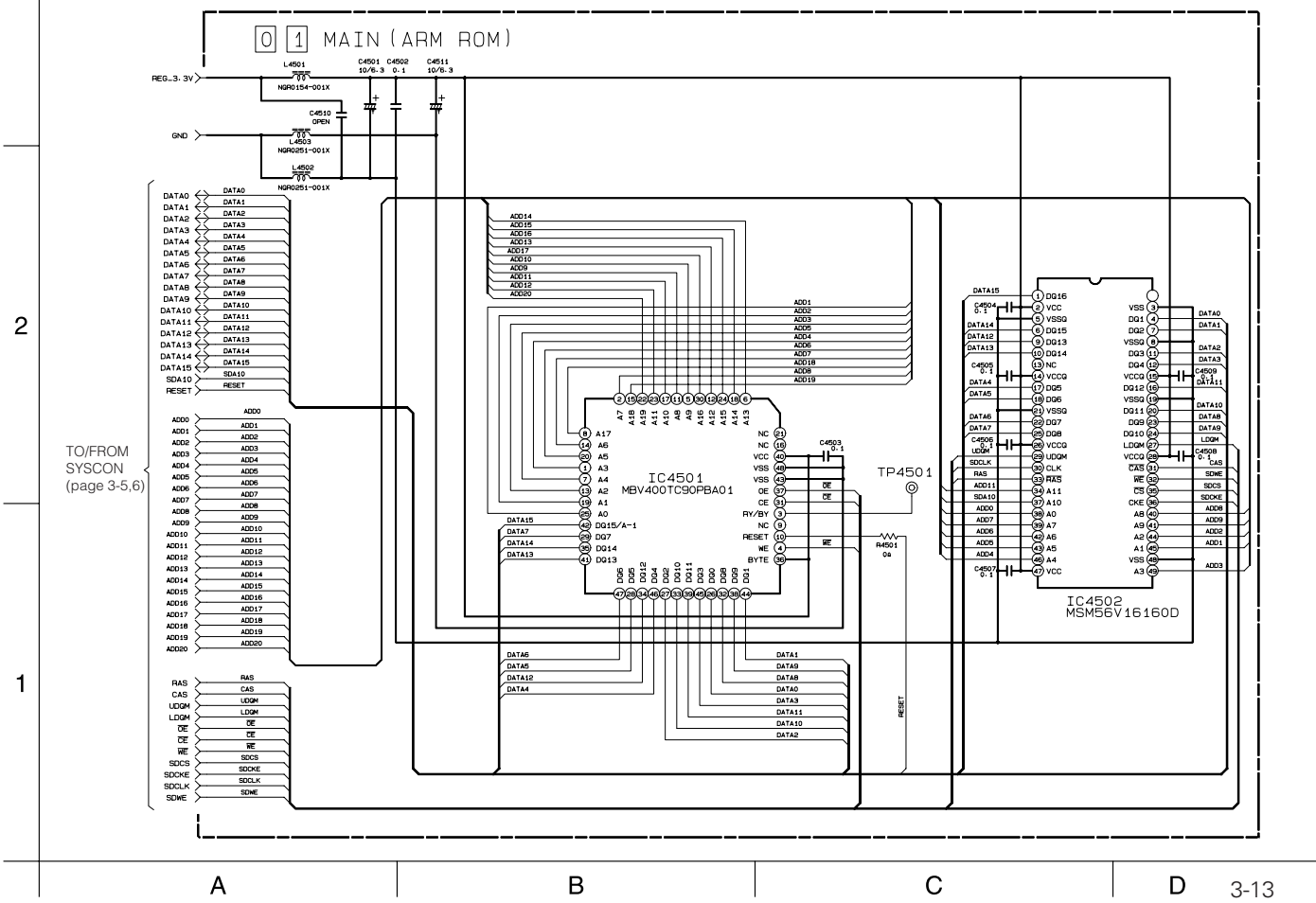
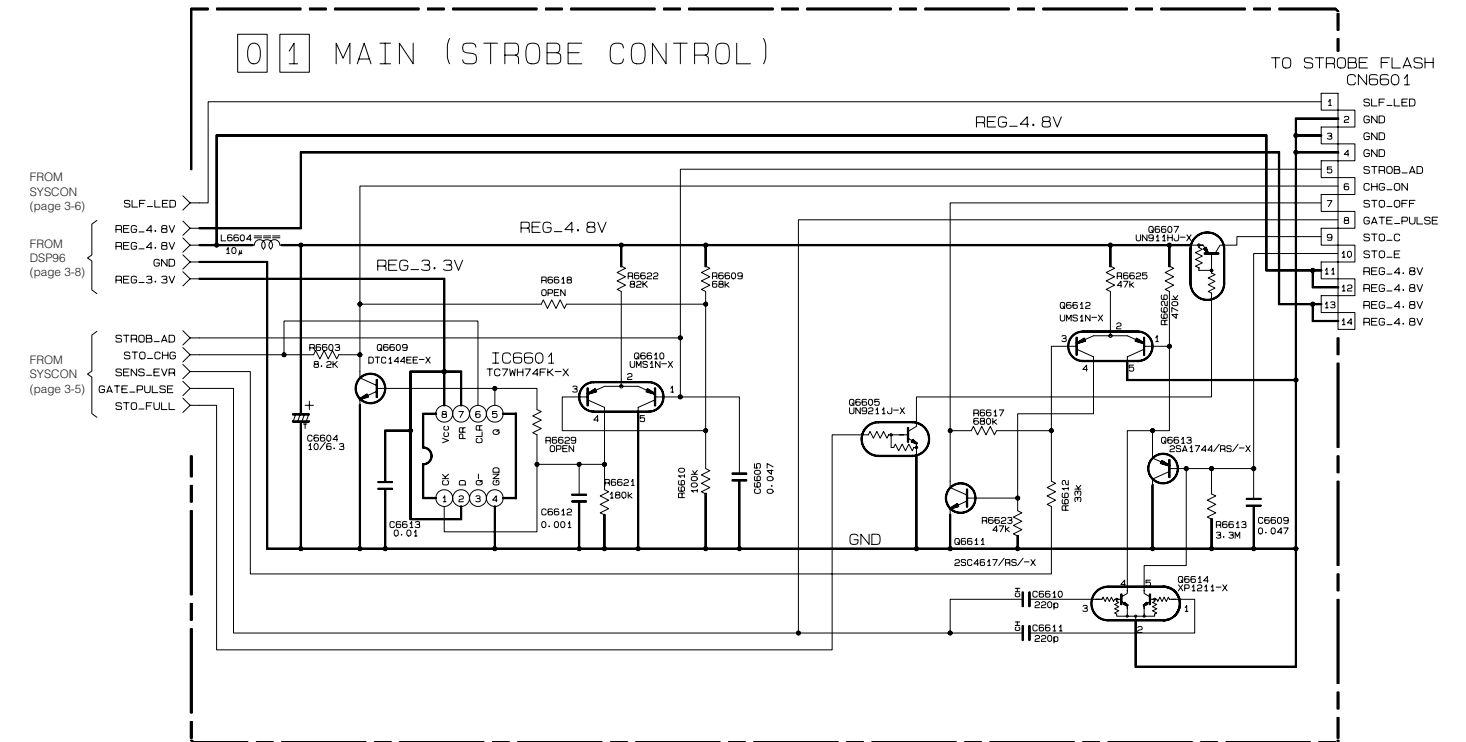
3.7 MAIN (CDS AGC A/D AND ARM ROM) SCHEMATIC DIAGRAM

NOTE : When ordering parts, be sure to order according to the Part Number indicated in the Parts List.



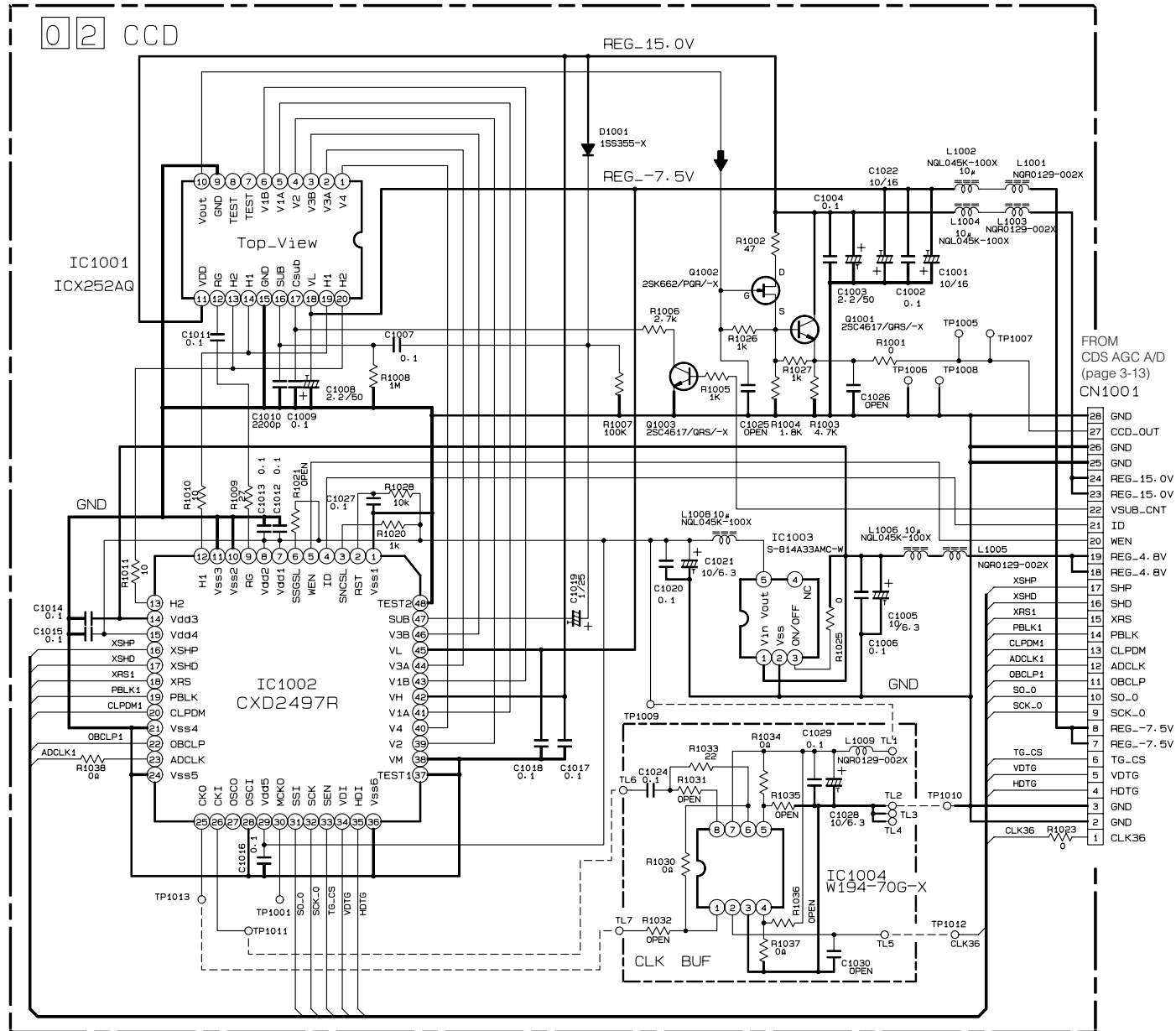
3.8 MAIN (STROBE CONTROL AND STROBE FLASH) SCHEMATIC DIAGRAM

NOTE : When ordering parts, be sure to order according to the Part Number indicated in the Parts List.



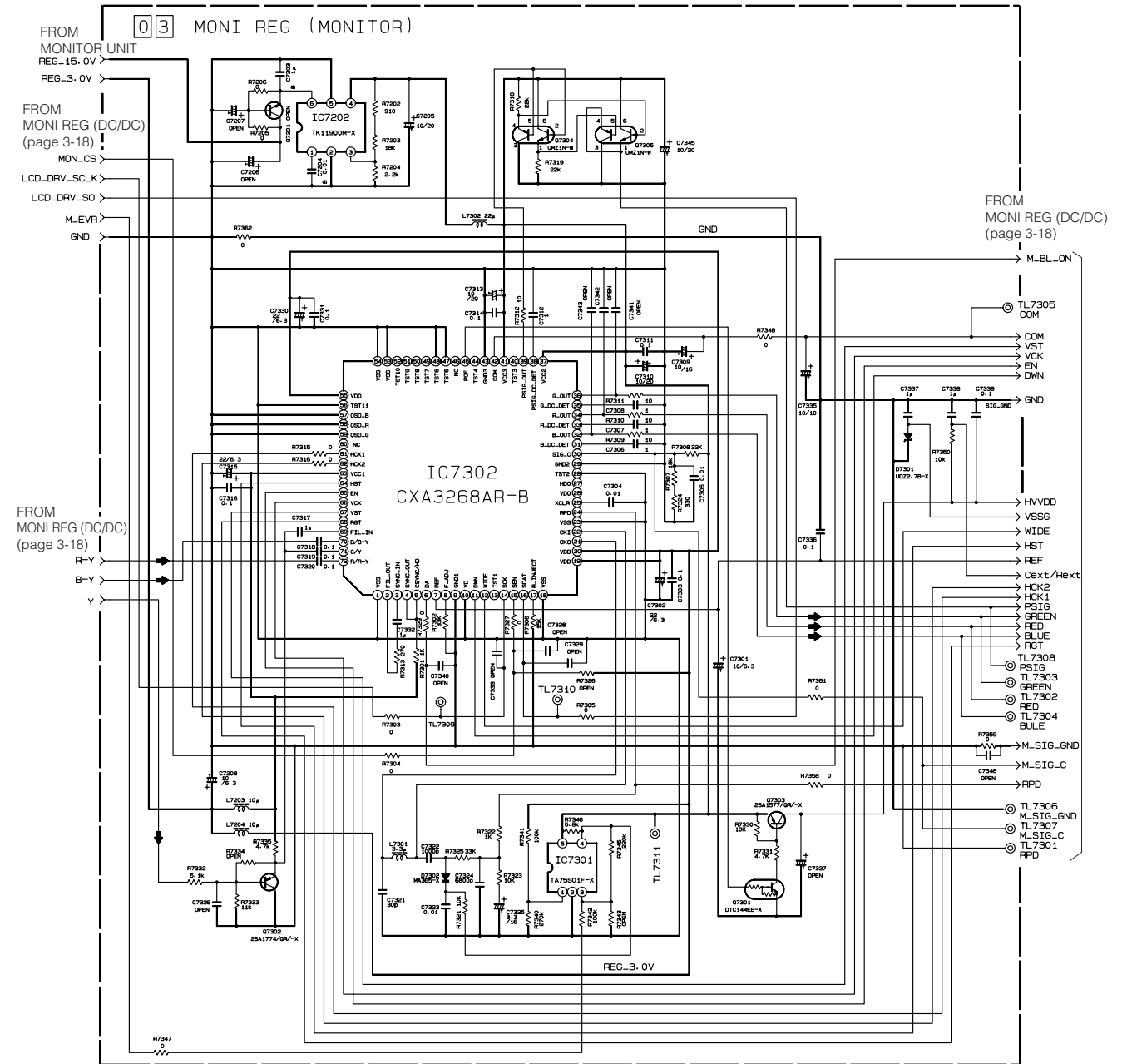
3.9 CCD SCHEMATIC DIAGRAM

NOTE : When ordering parts, be sure to order according to the Part Number indicated in the Parts List.



3.10 MONI REG (MONITOR) SCHEMATIC DIAGRAM

NOTE : When ordering parts, be sure to order according to the Part Number indicated in the Parts List.



3.13 VOLTAGE CHARTS

<SYSCON>

MODE PIN NO.	REC	PLAY
IC4005		
1	-	-
2	-	-
3	-	-
4	-	-
5	-	-
6	-	-
7	-	-
8	-	-
IC4007		
1	0	0
2	2.5	2.5
3	1.3	1.3
4	0.6	0.6
5	0	0
6	0	0
7	0	0
8	3.1	3.1
9	3.1	3.1
10	3.1	3.1
11	1.3	2
12	0	0
13	3	3
14	-	-
15	0.9	0.9
16	0	0
IC4008		
1	-	-
2	-	-
3	-	-
4	-	-
IC4101		
1	-	-
2	-	-
3	-	-
4	-	-
IC4102		
1	-	-
2	-	-
3	-	-
4	-	-
IC4103		
1	-	-
2	-	-
3	-	-
4	-	-
5	-	-
6	-	-
7	-	-
8	-	-
IC4104		
1	-	-
2	-	-
3	-	-
4	-	-
5	-	-
6	-	-
7	-	-
8	-	-
IC4105		
1	-	-
2	-	-
3	-	-

MODE PIN NO.	REC	PLAY
4	-	-
5	-	-
6	-	-
7	-	-
8	-	-
IC4106		
1	-	-
2	-	-
3	-	-
4	-	-
5	-	-
6	-	-
7	-	-
8	-	-
IC4107		
1	-	-
2	-	-
3	-	-
4	-	-
5	-	-
6	-	-
7	-	-
8	-	-
Q4001		
E	3.1	3.1
C	0	3.1
B	3.1	1.4
Q4002		
E	0	3.1
C	3	0
B	0	3.1
Q4003		
E	-	-
C	-	-
B	-	-
Q4004		
E	-	-
C	-	-
B	-	-
Q4005		
E	3.1	3.1
C	0	0
B	3.1	3.1
Q4006		
E	-	-
C	-	-
B	-	-

<DSP96>

MODE PIN NO.	REC	PLAY
IC3002		
1	0.9	0.8
2	0.9	0.8
3	0	0
4	1.8	1.7
5	3.1	3.2
IC3504		
1	-	-
2	-	-
3	-	-
4	-	-
5	-	-

<DSP97>

MODE PIN NO.	REC	PLAY
IC3002		
1	0.9	0.8
2	0.9	0.8
3	0	0
4	1.8	1.7
5	3.1	3.2
IC3504		
1	-	-
2	-	-
3	-	-
4	-	-
5	-	-

<SD SUB>

MODE PIN NO.	REC	PLAY
IC3801		
1	0.8	1.1
2	0.8	1
3	0	0
4	1.4	1.5
5	3.1	3.1
IC3802		
1	-	-
2	-	-
3	-	-
4	-	-
5	-	-
6	-	-
7	-	-
8	-	-
IC3803		
1	-	-
2	-	-
3	-	-
4	-	-
5	-	-
6	-	-
7	-	-
8	-	-
IC3804		
1	-	-
2	-	-
3	-	-
4	-	-
5	-	-
6	-	-
7	-	-
8	-	-
IC3805		
1	0	0
2	0	0
3	0	0
4	0	0
5	3.1	3.1
IC3806		
1	1.5	1.5
2	0	0
3	3.1	3.2
4	0	0
5	0	0
6	3.1	3.1
7	3.1	3.1
8	3.1	3.1
IC3807		
1	1.5	1.5

MODE PIN NO.	REC	PLAY
2	0	0
3	3.1	3.1
4	0	0
5	0	0
6	3.1	3.2
7	3.1	3.2
8	3.1	3.2
IC3808		
1	1.5	1.5
2	0	0
3	3.1	3.1
4	0	0
5	0	0
6	3.1	3.2
7	3.1	3.2
8	3.1	3.2
IC3809		
1	0	0
2	0	0
3	0	0
4	0	0
5	3.2	3.1

<F/Z MDA>

MODE PIN NO.	REC	PLAY
IC501		
1	0	0
2	0	0
3	0	0
4	0	0
5	0	0
6	0	0
7	0	0
8	0	0
9	0	0
10	0	0
11	0	0
12	0	0
13	0	0
14	6.5	6.6
IC502		
1	0	0
2	0	0
3	0	0
4	0	0
5	0	0
6	0	0
7	0	0
8	0	0
9	0	0
10	0	0
11	0	0
12	0	0
13	0	0
14	6.5	6.6
IC503		
1	0	0
2	0	0
3	0	0
4	3.2	3.2
5	3.2	3.2

MODE PIN NO.	REC	PLAY
IC504		
1	3.2	3.2
2	3.2	3.2
3	3.2	3.2
4	0	0
5	0	0
6	3.1	3.1
7	3.1	3.1
8	3.1	3.2
Q501		
E	0	0
C	2.8	2.9
B	0	0
Q502		
E	0	0
C	2.6	2.7
B	0	0
Q503		
E	0	0
C	6.6	6.6
B	0	0
Q504		
E	0	0
C	6.6	6.6
B	0	0

<IRIS>

MODE PIN NO.	REC	PLAY
IC401		
1	0	0
2	1.7	3.8
3	0.4	0
4	6.5	6.6
5	2.6	2.7
6	2.6	2.7
7	1.8	4.1
8	2.9	2.9
9	2.6	2.7
10	2.6	2.7
11	0	0
12	0	0
13	0	0
14	0.7	0.7
IC402		
1	4.2	1.9
2	1.9	2.4
3	1.9	2.3
4	0	0
5	2.6	2.7
6	2.6	2.6
7	2.6	2.7
8	6.5	6.6
Q401		
E	0	0
C	2.4	2.4
B	0.7	0.7
Q402		
E	3.2	3.2
C	0	2.4
B	3.2	3.1

<CCD AGC A/D>

MODE PIN NO.	REC	PLAY
IC2001		
1	0	0
2	1.4	0
3	1.4	0
4	1.5	0
5	1.4	0
6	1.6	0
7	2.3	3
8	0.6	0
9	0	0
10	0	0
11	0	0
12	0	0
13	0	0
14	0	0
15	3	0
16	1.5	0
17	0	0
18	2.5	0
19	2.5	0
20	3	3
21	0	0
22	0	0
23	3	3
24	0	0
25	2	0.7
26	2.1	2.8
27	0	0
28	1.9	3
29	2	0
30	0	0
31	3	3
32	2	2
33	0	1
34	0	1.6
35	1.2	1.2
36	0	0
37	0	0
38	3	3
39	0	0
40	0	0
41	3	3
42	0	0
43	3.1	3.1
44	3	3
45	0.5	0
46	3	3
47	0	0
48	0	0
IC2002		
1	6.5	6.5
2	0	0
3	6.5	6.5
4	0	0
5	3	3

<STROBE CONTROL>

MODE PIN NO.	REC	PLAY
IC6601		
1	0	0
2	3.2	3.2
3	3.2	3.2
4	0	0
5	0	0
6	0	0
7	3.2	3.2
8	3.2	3.2
Q6605		
E	0	0
C	6.5	6.5
B	0	0
Q6607		
E	6.2	6.5
C	0	0
B	6.5	6.5
Q6609		
E	0	0
C	0	0
B	0	0
Q6610		
1	0	0
2	0.5	0.5
3	3.9	3.9
4	0	0
5	0	0
Q6611		
E	0	0
C	6.1	0
B	0	0.6
Q6612		
1	0.5	0.5
2	1.1	1.1
3	0.6	0.6
4	0.6	0.5
5	0	0
Q6613		
E	0.6	0.6
C	0	0
B	0	0
Q6614		
1	0	0
2	0	0
3	0	0
4	0.6	0.6
5	0	0

<STROBE FLASH>

MODE PIN NO.	REC	PLAY
IC6502		
1	0	0
2	0	0
3	0	0
4	0	0
5	6.6	6.5
Q6501		
E	6.5	6.6
C	6.5	6.6
B	6.5	6.6
Q6502		
E	0	0
C	6.5	6.5
B	0	0
Q6503		
E	6.5	6.5
C	0	0
B	0	0
Q6504		
E	0	0
C	0	0
B	0	0
Q6506		
E	-	-
C	-	-
B	-	-
Q6507		
1	0	0
2	0	0.6
3	0	0
4	0	0
5	0	0

<CCD>

MODE PIN NO.	REC	PLAY
IC1001		
1	-7.4	0
2	-7.3	14.9
3	-7.3	14.9
4	0	0
5	0	14.9
6	0	14.9
7	0	0
8	0	0
9	0	0
10	10.7	9.9
11	14.9	14.9
12	12.6	12.3
13	2.5	0
14	2.8	0
15	0	0
16	10.3	9.7
17	10.1	10.1
18	-7.6	-7.7
19	2.8	0
20	2.5	0
IC1002		
1	0	0
2	3.3	3.3
3	3.3	3.3
4	1.7	0
5	3.2	0

MODE PIN NO.	REC	PLAY
6	0	0
7	3.3	3.3
8	3.3	3.3
9	0.5	0
10	0	0
11	0	0
12	2.6	0
13	2.3	0
14	6.4	6.6
15	3.3	3.3
16	2.6	0
17	2.5	0
18	2.5	0
19	3	0
20	3.3	0
21	0	0
22	3.2	0
23	1.5	0
24	0	0
25	1.6	0
26	13	1.6
27	3.3	3.3
28	0	0
29	3.3	3.3
30	1.5	0
31	0.6	0
32	3.1	3
33	3.1	3.1
34	3	3
35	3	3
36	0	0
37	0	0
38	0	0
39	0	0
40	-7.3	0
41	0	14.9
42	14.9	14.9
43	0	14.9
44	-7.3	14.9
45	-7.6	-7.6
46	-7.3	14.9
47	-6.9	14.9
48	0	0
IC1003		
1	6.4	6.4
2	0	0
3	6.4	6.4
4	0	0
5	3.3	3.3

<MONI REG>

MODE PIN NO.	REC	PLAY
IC7202		
1	-	-
2	-	-
3	-	-
4	-	-
5	-	-
6	-	-
IC7301		
1	2.2	2.2
2	0	0
3	2.2	2.2
4	4	4
5	12	12
IC7302		
1	-	-
2	-	-
3	-	-
4	-	-
5	-	-
6	-	-
7	-	-
8	-	-
9	-	-
10	-	-
11	-	-
12	-	-
13	-	-
14	-	-
15	-	-
16	-	-
17	-	-
18	-	-
19	-	-
20	-	-
21	-	-
22	-	-
23	-	-
24	-	-
25	-	-
26	-	-
27	-	-
28	-	-
29	-	-
30	-	-
31	-	-
32	-	-
33	-	-
34	-	-
35	-	-
36	-	-
37	-	-
38	-	-
39	-	-
40	-	-
41	-	-
42	-	-
43	-	-
44	-	-
45	-	-
46	-	-
47	-	-
48	-	-
49	-	-

MODE PIN NO.	REC	PLAY
50	-	-
51	-	-
52	-	-
53	-	-
54	-	-
55	-	-
56	-	-
57	-	-
58	-	-
59	-	-
60	-	-
61	-	-
62	-	-
63	-	-
64	-	-
65	-	-
66	-	-
67	-	-
68	-	-
69	-	-
70	-	-
71	-	-
72	-	-
Q7201		
E	-	-
C	-	-
B	-	-
Q7301		
E	0	0
C	0	0
B	3	3
Q7302		
E	-	-
C	-	-
B	-	-
Q7303		
E	12	12
C	12	12
B	11.3	11.3
Q7304		
1	5	5
2	5.5	5.5
3	0	0
4	6	6
5	5.5	5.5
6	12	5.5
Q7305		
1	5.5	5.5
2	6	6
3	0	0
4	5.5	5.5
5	5.1	5
6	12	12

<DC/DC>

MODE PIN NO.	REC	PLAY
Q9006		
E	0	0
C	0	0
B	3.3	3.3
Q9007		
E	6.7	6.7
C	0	0
B	0	0
Q9307		
E	0	0
C	0	0
B	3.3	3.3

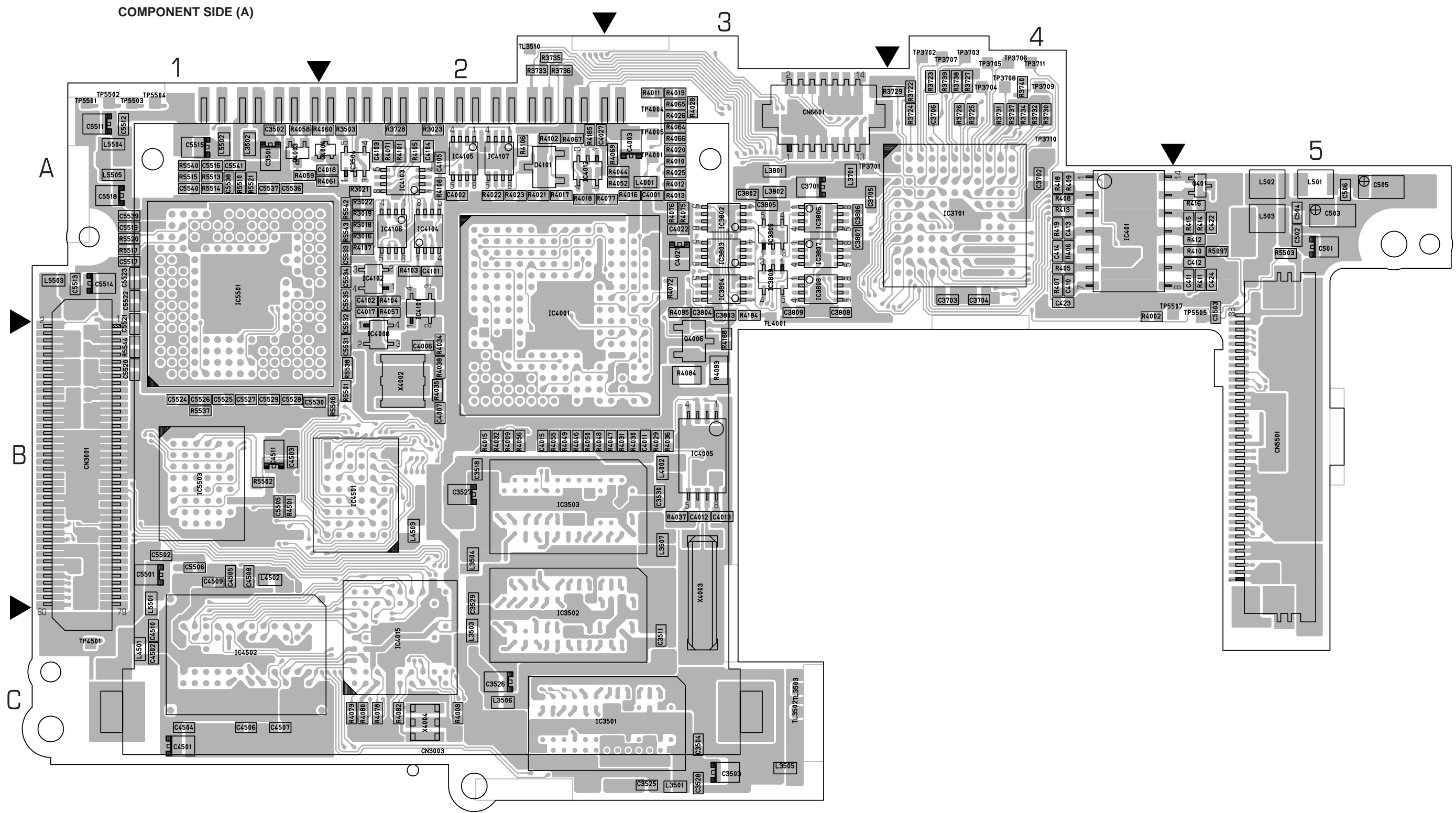
<VIDEO OUT/ USB/ PRINTER/DC JACK>

MODE PIN NO.	REC	PLAY
IC101		
1	6	1.5
2	0	3
3	0	1.3
4	2.5	1.1
5	0	0
6	0	0
7	0	3.6
8	0	0
9	0	2.2
10	0	2.1
11	0	1.4
12	0	1.4
13	0	6.5
14	0	1.9
15	6.5	6.6
16	3	3
17	0	0
18	0	3.1
19	0	1.8
20	1.8	1.8
IC102		
1	0	0
2	0	0
3	3.1	3.2
4	0	0
5	3	3
6	0	0
7	0	0
8	3	3

<MONITOR BACK LIGHT>

MODE PIN NO.	REC	PLAY
Q7101		
E	0	0
C	6.4	6.4
B	0	0
Q7102		
E	0	0
C	6.4	6.4
B	0	0
Q7103		
E	6.5	0
C	6.5	6.5
B	0	0
Q7104		
E	0	0
C	0	0
B	0.6	0.6
Q7105		
E	0	0
C	0	0
B	-0.5	-0.5
Q7106		
E	0	0
C	0.6	0.6
B	0	0

3.14 MAIN CIRCUIT BOARD



01 MAIN PWB YB10282-01-06

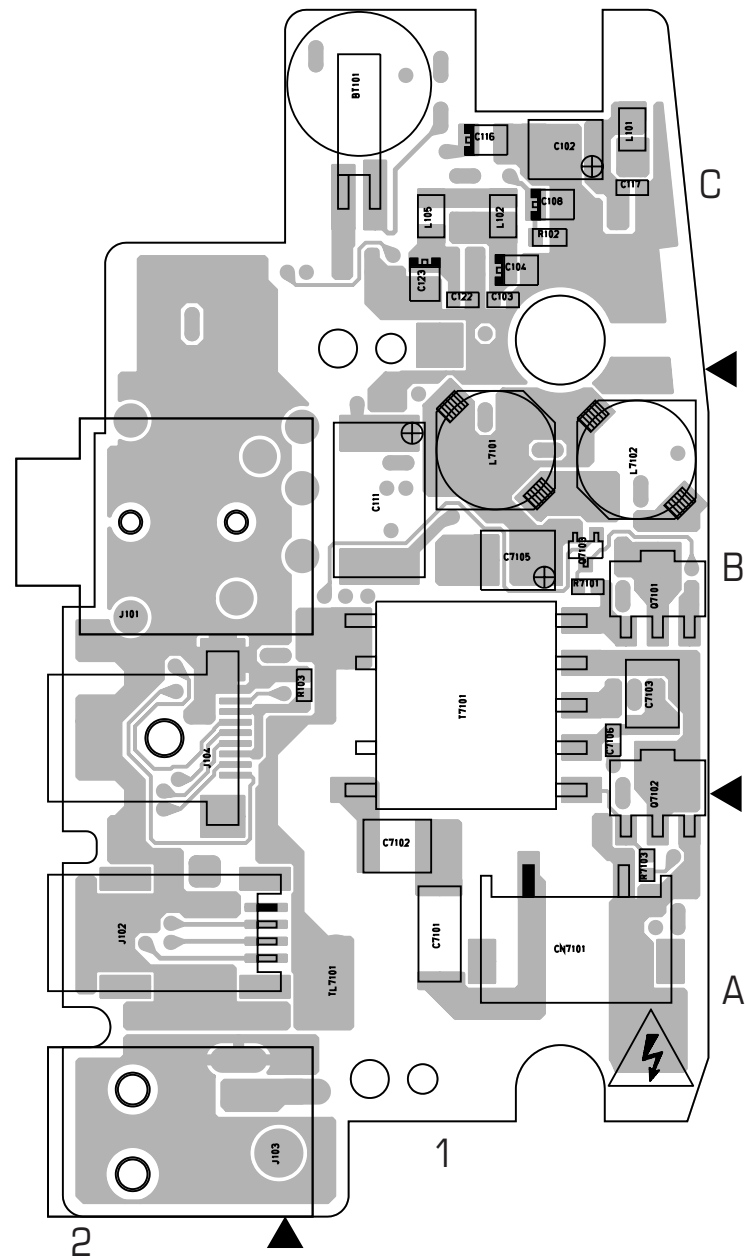
COMPONENT PARTS LOCATION GUIDE <MAIN > YB10282-01-06

REF.NO.	LOCATION	REF.NO.	LOCATION	REF.NO.	LOCATION	REF.NO.	LOCATION	REF.NO.	LOCATION
CAPACITOR									
C402	B C 5B	C3044	B C 1C	C5512	A C 1A	IC2001	B C 2B	Q4004	A C 2A
C403	B C 5A	C3045	B C 1C	C5513	A C 1A	IC2002	B C 2C	Q4005	B C 5A
C410	A C 4A	C3046	B C 2B	C5514	A C 1A	IC3001	B C 1C	Q4006	A C 3B
C411	A C 5A	C3050	B C 2B	C5515	A C 1A	IC3002	B C 2B	Q401	A C 5A
C412	A C 5A	C3501	A C 1A	C5516	A C 1A	IC3501	A C 2C	Q402	B C 5B
C413	A C 4A	C3502	A C 1A	C5517	A C 1A	IC3502	A C 2C	Q501	B C 4A
C414	A C 4A	C3503	A C 3C	C5518	A C 1A	IC3503	A C 2B	Q502	B C 4A
C415	B C 5B	C3504	A C 3C	C5519	A C 1A	IC3504	A C 2A	Q503	B C 4A
C416	B C 5B	C3511	A C 3C	C5520	A C 1B	IC3701	A C 4A	Q504	B C 4A
C417	B C 4A	C3518	A C 2B	C5521	A C 1B	IC3801	B C 2A	Q5501	B C 1A
C418	B C 5B	C3525	A C 3C	C5522	A C 1A	IC3802	A C 3A	Q5502	B C 1B
C419	B C 5B	C3526	A C 2C	C5523	A C 1A	IC3803	A C 3A	Q5503	B C 1B
C420	B C 5B	C3527	A C 2B	C5524	A C 1B	IC3804	A C 3A	Q5504	B C 2A
C421	B C 4A	C3528	A C 3C	C5525	A C 1B	IC3805	A C 3A	Q5505	B C 2A
C422	A C 5A	C3529	A C 2B	C5526	A C 1B	IC3806	A C 3A	Q6605	B C 3A
C423	A C 4A	C3530	A C 3B	C5527	A C 1B	IC3807	A C 3A	Q6607	B C 3A
C424	A C 5A	C3701	A C 3A	C5528	A C 1B	IC3808	A C 3A	Q6609	B C 3A
C425	B C 5A	C3702	A C 4A	C5529	A C 1B	IC3809	A C 3A	Q6610	B C 3A
C501	A C 5A	C3703	A C 4A	C5530	A C 1B	IC4001	A C 2A	Q6611	B C 3A
C502	A C 5A	C3704	A C 4A	C5531	A C 2B	IC4005	A C 3B	Q6612	B C 3A
C503	A C 5A	C3705	A C 3A	C5532	A C 2B	IC4007	B C 5B	Q6613	B C 3A
C504	A C 5A	C3706	A C 4A	C5533	A C 2A	IC4008	A C 2B	Q6614	B C 3A
C505	A C 5A	C3801	B C 2B	C5534	A C 2A	IC4012	A C 2A		
C506	A C 5A	C3802	A C 3A	C5535	A C 2A	IC4015	A C 2C		
C507	B C 3A	C3803	A C 3A	C5536	A C 1A	IC4101	A C 2A		
C508	B C 3A	C3804	A C 3A	C5537	A C 1A	IC4102	A C 2A		
C509	B C 3A	C3805	A C 3A	C5538	A C 1A	IC4103	A C 2A		
C510	B C 4A	C3806	A C 3A	C5539	A C 1A	IC4104	A C 2A		
C511	B C 5A	C3807	A C 3A	C5540	A C 1A	IC4105	A C 2A		
C512	B C 5A	C3808	A C 3A	C5541	A C 1A	IC4106	A C 2A		
C513	B C 4A	C3809	A C 3A	C5542	B C 2A	IC4107	A C 2A		
C2001	B C 2B	C3810	B C 2A	C5543	B C 2A	IC4501	A C 2B		
C2002	B C 2B	C4001	A C 3A	C5544	B C 2A	IC4502	A C 1C		
C2003	B C 2B	C4002	A C 2A	C5545	B C 2A	IC5001	B C 1A		
C2004	B C 2B	C4003	A C 3A	C5546	B C 1A	IC5002	B C 2A		
C2005	B C 2B	C4006	A C 2B	C5547	B C 1A	IC5003	B C 3A		
C2006	B C 2B	C4007	A C 2B	C5548	B C 1A	IC5004	B C 3A		
C2007	B C 2B	C4011	A C 3B	C5549	B C 2A	IC5005	B C 3A		
C2008	B C 3B	C4012	A C 3B	C5550	B C 1B	IC5006	B C 3A		
C2009	B C 3B	C4013	A C 3B	C5551	B C 2B	IC5007	B C 3A		
C2010	B C 3B	C4015	A C 2B	C5552	B C 1B	IC5008	B C 3A		
C2011	B C 3B	C4016	B C 5B	C5553	B C 1B	IC5009	B C 3A		
C2012	B C 3B	C4017	A C 2A	C5554	B C 1A	IC5010	B C 3B		
C2013	B C 2B	C4018	A C 2A	C5555	B C 1A	IC5011	B C 2B		
C2015	B C 2B	C4021	A C 3A	C5556	B C 1A	IC5012	B C 2B		
C2017	B C 2C	C4022	A C 3A	C5557	B C 1A	IC5501	A C 1A		
C3001	B C 2C	C4027	A C 2A	C5558	B C 1A	IC5503	A C 1B		
C3002	B C 1B	C4028	B C 5B	C5559	B C 2B	IC6601	B C 3A		
C3003	B C 2B	C4101	A C 2A	C5560	B C 1B	COIL			
C3004	B C 2B	C4102	A C 2A	C5561	B C 2B	L401	B C 5A		
C3006	B C 1B	C4103	A C 2A	C5562	B C 2B	L501	A C 5A		
C3007	B C 1C	C4104	A C 2A	C5563	B C 1B	L502	A C 5A		
C3008	B C 2C	C4105	A C 2A	C5564	B C 1B	L503	A C 5A		
C3009	B C 1B	C4501	A C 1C	C5566	B C 1A	L2001	B C 2C		
C3010	B C 1C	C4502	A C 1C	C5567	B C 1B	L3001	B C 1C		
C3011	B C 2C	C4503	A C 1B	C5568	B C 1B	L3002	B C 1C		
C3012	B C 1C	C4504	A C 1C	C5569	B C 1A	L3003	B C 3C		
C3013	B C 2C	C4505	A C 1C	C5570	B C 1A	L3004	B C 1C		
C3014	B C 1C	C4506	A C 1C	C6604	B C 3A	L3501	A C 3C		
C3015	B C 1C	C4507	A C 1C	C6605	B C 3A	L3502	A C 1A		
C3016	B C 1C	C4508	A C 1B	C6609	B C 3A	L3503	A C 2C		
C3017	B C 2C	C4509	A C 1B	C6610	B C 3A	L3504	A C 2B		
C3018	B C 1B	C4510	A C 1C	C6611	B C 3A	L3505	A C 3C		
C3019	B C 1C	C4511	A C 1B	C6612	B C 3A	L3506	A C 3C		
C3020	B C 2B	C5001	B C 2A	C6613	B C 3A	L3507	A C 3B		
C3021	B C 1B	C5002	B C 2A	CONNECOTR					
C3022	B C 2B	C5003	B C 1A	CN501	B C 4A	L3701	A C 3A		
C3023	B C 2B	C5004	B C 1A	CN502	B C 5A	L3801	A C 3A		
C3024	B C 2B	C5005	B C 2B	CN2001	B C 3B	L3802	A C 3A		
C3025	B C 2B	C5006	B C 2B	CN2002	B C 1B	L4001	A C 3A		
C3026	B C 1C	C5007	B C 2A	CN3001	A C 1B	L4002	A C 3B		
C3027	B C 2B	C5013	B C 2A	CN3002	B C 2C	L4501	A C 1C		
C3028	B C 1B	C5014	B C 2A	CN3003	A C 2C	L4502	A C 1B		
C3029	B C 1C	C5015	B C 2A	CN4001	B C 1A	L4503	A C 2B		
C3030	B C 2B	C5016	B C 1B	CN5501	A C 5B	L5001	B C 2A		
C3031	B C 2C	C5017	B C 1B	CN6601	A C 3A	L5002	B C 1A		
C3032	B C 2B	C5018	B C 3A	DIODE					
C3033	B C 2B	C5019	B C 2B	D501	B C 4A	L5003	B C 2B		
C3034	B C 1B	C5020	B C 2B	D4002	B C 5A	L5004	B C 1A		
C3035	B C 1C	C5021	B C 1A	D4004	B C 5A	L5005	B C 2A		
C3036	B C 1C	C5022	B C 1A	D4005	B C 3A	L5501	A C 1B		
C3037	B C 1C	C5023	B C 3A	D4101	A C 2A	L5502	A C 1A		
C3038	B C 1C	C5024	B C 3A	IC					
C3039	B C 1B	C5025	B C 3A	IC401	A C 4A	L5503	A C 1A		
C3040	B C 2C	C5026	B C 3A	IC402	B C 5B	L5504	A C 1A		
C3041	B C 2C	C5501	A C 1B	IC501	B C 3A	L5505	A C 1A		
C3042	B C 1C	C5502	A C 1B	IC502	B C 4A	L5506	B C 2A		
C3043	B C 2C	C5503	A C 5A	IC503	B C 5A	TRANSISTOR			
		C5504	A C 1B	IC504	B C 5A	Q4001	B C 1A		
		C5505	A C 1B			Q4002	B C 5A		
		C5506	A C 1B			Q4003	A C 1A		
		C5511	A C 1A						

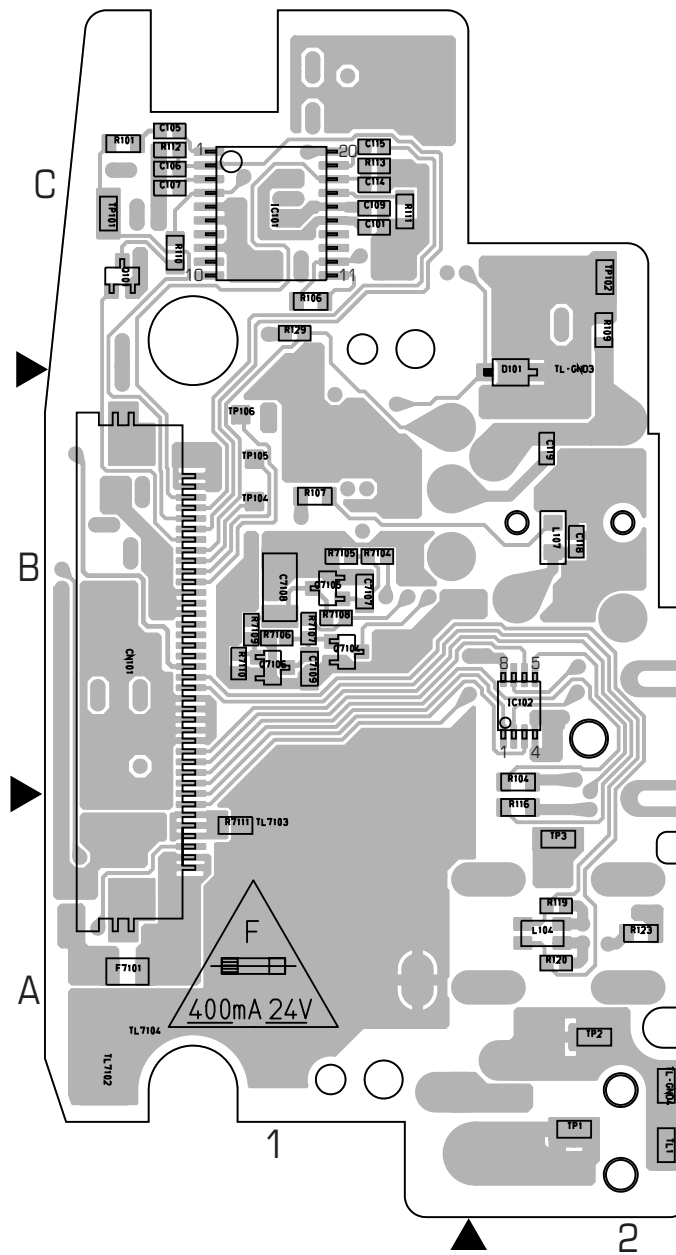
COMPONENT PARTS LOCATION GUIDE <MAIN > YB10282-01-06

REF.NO.	LOCATION	REF.NO.	LOCATION	REF.NO.	LOCATION	REF.NO.	LOCATION	REF.NO.	LOCATION
RESISTOR									
R405	A C 4A	R3072	B C 1B	R4014	B C 5A	R5017	B C 1B	R6625	B C 3A
R406	A C 4A	R3073	B C 1B	R4015	A C 2B	R5018	B C 2A	R6626	B C 3A
R407	A C 4A	R3074	B C 1B	R4016	A C 3A	R5019	B C 2A	R6629	B C 3A
R409	A C 4A	R3075	B C 2C	R4017	A C 2A	R5020	B C 2A	RA2001	B C 2B
R410	A C 5A	R3115	B C 1C	R4018	A C 2A	R5040	B C 2B	RA2002	B C 2B
R408	A C 4A	R3116	B C 1C	R4019	A C 3A	R5041	B C 2B	RA3001	B C 2C
R411	A C 5A	R3117	B C 1B	R4020	A C 3A	R5042	B C 2A	RA3002	B C 2C
R412	A C 5A	R3118	B C 2B	R4021	A C 2A	R5044	B C 2B	RA3003	B C 2C
R413	A C 4A	R3119	B C 1B	R4022	A C 2A	R5045	B C 2B	RA3004	B C 2C
R414	A C 5A	R3120	B C 2C	R4023	A C 2A	R5046	B C 2B	RA3005	B C 2C
R415	A C 5A	R3121	B C 2B	R4024	B C 5A	R5047	B C 2B	RA3006	B C 2C
R416	A C 5A	R3122	B C 2B	R4025	A C 3A	R5048	B C 2B	RA3007	B C 2C
R417	B C 5B	R3123	B C 1B	R4026	A C 3A	R5049	B C 2B	RA5024	B C 2A
R418	A C 4A	R3124	B C 1B	R4027	B C 1B	R5050	B C 2B	RA5025	B C 2A
R419	A C 4A	R3125	B C 2B	R4028	A C 3A	R5051	B C 2B	RA5026	B C 1A
R420	B C 5B	R3126	B C 2B	R4029	A C 3B	R5052	B C 2B	RA5027	B C 1A
R421	B C 5B	R3127	B C 1B	R4030	A C 3B	R5053	B C 2B	RA5028	B C 1A
R422	B C 5B	R3128	B C 2C	R4031	A C 3B	R5054	B C 2B	RA5029	B C 2A
R423	B C 5B	R3129	B C 1B	R4032	A C 2B	R5055	B C 1B		
R424	B C 5B	R3131	B C 2B	R4033	A C 2B	R5056	B C 2A	TEST POINT	
R425	B C 5B	R3132	B C 2B	R4035	A C 2B	R5057	B C 2A	TP2002	B C 2B
R426	B C 5B	R3133	B C 2B	R4036	A C 3B	R5060	B C 2B	TP3701	A C 3A
R427	B C 5B	R3134	B C 2B	R4037	A C 3B	R5063	B C 2B	TP3702	A C 4A
R428	B C 5B	R3135	B C 2B	R4038	A C 2B	R5064	B C 2B	TP3703	A C 4A
R501	B C 3A	R3176	B C 2C	R4039	B C 2A	R5065	B C 2B	TP3704	A C 4A
R502	B C 3A	R3177	B C 2C	R4040	B C 2A	R5066	B C 3A	TP3705	A C 4A
R503	B C 3A	R3178	B C 2C	R4041	B C 2A	R5067	B C 3A	TP3706	A C 4A
R504	B C 4A	R3180	B C 1B	R4042	B C 2A	R5068	B C 3A	TP3707	A C 4A
R505	B C 4A	R3181	B C 2C	R4043	B C 2A	R5092	B C 1A	TP3708	A C 4A
R506	B C 4A	R3182	B C 2C	R4044	A C 3A	R5094	B C 1A	TP3709	A C 4A
R507	B C 4A	R3183	B C 2C	R4045	B C 2B	R5095	B C 1A	TP3710	A C 4A
R508	B C 4A	R3184	B C 1B	R4046	A C 2B	R5096	B C 1B	TP3711	A C 4A
R509	B C 4A	R3198	B C 2B	R4047	A C 3B	R5097	A C 5A	TP4001	A C 3A
R510	B C 5A	R3199	B C 2B	R4048	A C 2B	R5154	B C 2A	TP4004	A C 3A
R511	B C 5A	R3200	B C 2B	R4049	A C 2B	R5155	B C 2A	TP4005	A C 3A
R512	B C 5A	R3201	B C 2B	R4050	A C 2B	R5158	B C 2A	TP4501	A C 1C
R513	B C 4A	R3202	B C 2B	R4051	B C 1B	R5159	B C 5A	TP5001	B C 2A
R514	B C 4A	R3203	B C 2B	R4052	A C 3A	R5160	B C 2A	TP5003	B C 2A
R515	B C 4A	R3204	B C 2B	R4055	A C 2B	R5268	B C 1B	TP5004	B C 2A
R516	B C 4A	R3205	B C 2B	R4056	A C 2B	R5404	B C 1B	TP5005	B C 2A
R517	B C 4A	R3206	B C 2B	R4057	A C 2A	R5405	B C 1B	TP5006	B C 2A
R518	B C 4A	R3207	B C 2B	R4058	A C 1A	R5408	B C 1B	TP5007	B C 2A
R519	B C 4A	R3248	B C 2C	R4059	A C 1A	R5411	B C 1B	TP5008	B C 2A
R520	B C 4A	R3249	B C 2B	R4060	A C 2A	R5414	B C 1B	TP5009	B C 2A
R2001	B C 2B	R3250	B C 2B	R4061	A C 2A	R5439	B C 1B	TP5501	A C 1A
R2002	B C 2B	R3271	B C 2C	R4062	B C 3B	R5446	B C 1B	TP5502	A C 1A
R2003	B C 2B	R3272	B C 2B	R4063	B C 3B	R5447	B C 1B	TP5503	A C 1A
R2004	B C 3B	R3273	B C 2B	R4064	A C 3A	R5501	A C 2B	TP5504	A C 1A
R2005	B C 3B	R3274	B C 2B	R4065	A C 3A	R5502	A C 1B	TP5505	A C 5A
R2007	B C 2B	R3295	B C 2B	R4066	A C 3A	R5503	A C 5A	TP5507	A C 4A
R2008	B C 2B	R3296	B C 2B	R4067	A C 2A	R5506	A C 2B	TP5508	B C 1A
R2009	B C 2C	R3297	B C 2B	R4069	A C 3A	R5510	A C 1A	TP5515	B C 1A
R2011	B C 2C	R3503	A C 2A	R4071	A C 2A	R5513	A C 1A	TP5516	B C 1A
R3001	B C 2B	R3504	B C 1B	R4072	A C 3A	R5514	A C 1A	TP5518	B C 1B
R3002	B C 2B	R3505	B C 1C	R4075	A C 3A	R5515	A C 1A	TP5520	B C 1B
R3003	B C 1B	R3506	B C 1B	R4076	A C 3A	R5517	A C 1A	TP5521	B C 2B
R3005	B C 1B	R3507	B C 1C	R4077	A C 2A	R5520	A C 1A	OTHER	
R3007	B C 2B	R3508	B C 1C	R4078	A C 2C	R5521	A C 1A	TL2002	B C 3B
R3008	B C 1B	R3722	A C 4A	R4079	A C 2C	R5523	B C 2A	TL3001	B C 2C
R3009	B C 1C	R3723	A C 4A	R4080	A C 2C	R5524	B C 2A	TL3002	B C 2C
R3010	B C 1C	R3724	A C 4A	R4081	B C 1B	R5525	B C 2A	TL3004	B C 2B
R3011	B C 1B	R3725	A C 4A	R4082	A C 2C	R5526	B C 2A	TL3006	B C 2B
R3012	B C 1C	R3726	A C 4A	R4083	A C 3B	R5527	B C 1B	TL3009	B C 1B
R3013	B C 2B	R3727	A C 4A	R4084	A C 3B	R5528	B C 1A	TL3015	B C 1B
R3014	B C 1B	R3728	A C 2A	R4085	A C 3A	R5529	B C 1A	TL3017	B C 1B
R3015	B C 1B	R3729	A C 4A	R4101	A C 2A	R5530	B C 1B	TL3502	A C 3C
R3016	A C 2A	R3730	A C 4A	R4102	A C 2A	R5531	B C 1B	TL3503	A C 3C
R3017	B C 1C	R3731	A C 4A	R4103	A C 2A	R5532	B C 1B	TL3510	A C 2A
R3018	A C 2A	R3732	A C 4A	R4104	A C 2A	R5533	B C 1B	TL4001	A C 3A
R3019	A C 2A	R3733	A C 2A	R4105	A C 2A	R5534	B C 1B	TL5001	B C 3A
R3020	B C 1C	R3734	A C 4A	R4106	A C 2A	R5535	B C 1B	TL5501	B C 5A
R3021	A C 2A	R3735	A C 2A	R4107	A C 2A	R5536	B C 1A	TL5502	B C 1B
R3022	A C 2A	R3736	A C 2A	R4108	A C 2A	R5537	A C 1B	TL5502	B C 2C
R3023	A C 2A	R3737	A C 4A	R4184	A C 3A	R5538	A C 2B	X3001	B C 1B
R3024	B C 2C	R3738	A C 4A	R4185	A C 2A	R5540	A C 1A	X3002	B C 2B
R3031	B C 2C	R3739	A C 4A	R4188	A C 3B	R5541	B C 2B	X4002	A C 2B
R3032	B C 2C	R3740	A C 4A	R4501	A C 1B	R5542	A C 2A	X4003	A C 3B
R3033	B C 2C	R3801	B C 2B	R5001	B C 2A	R5543	A C 2A	X4004	A C 2C
R3034	B C 2C	R4001	B C 1A	R5002	B C 2A	R5544	A C 1B		
R3035	B C 2C	R4002	A C 4A	R5003	B C 2A	R5545	B C 2A		
R3036	B C 2C	R4003	B C 2C	R5004	B C 2A	R5546	B C 5A		
R3037	B C 2C	R4004	B C 1B	R5005	B C 2A	R6603	B C 3A		
R3038	B C 2C	R4005	B C 2B	R5006	B C 2A	R6609	B C 3A		
R3039	B C 2C	R4006	B C 2B	R5007	B C 3A	R6610	B C 3A		
R3040	B C 2C	R4007	B C 2B	R5008	B C 3A	R6612	B C 3A		
R3041	B C 2C	R4008	A C 2C	R5009	B C 1B	R6613	B C 3A		
R3042	B C 2B	R4009	A C 2B	R5010	B C 5A	R6617	B C 3A		
R3043	B C 2B	R4010	A C 3A	R5012	B C 3A	R6618	B C 3A		
R3044	B C 2B	R4011	A C 3A	R5013	B C 5A	R6621	B C 3A		
		R4012	A C 3A	R5014	B C 1B	R6622	B C 3A		
		R4013	A C 3A	R5015	B C 2A	R6623	B C 3A		

COMPONENT SIDE (A)



FOIL SIDE (B)

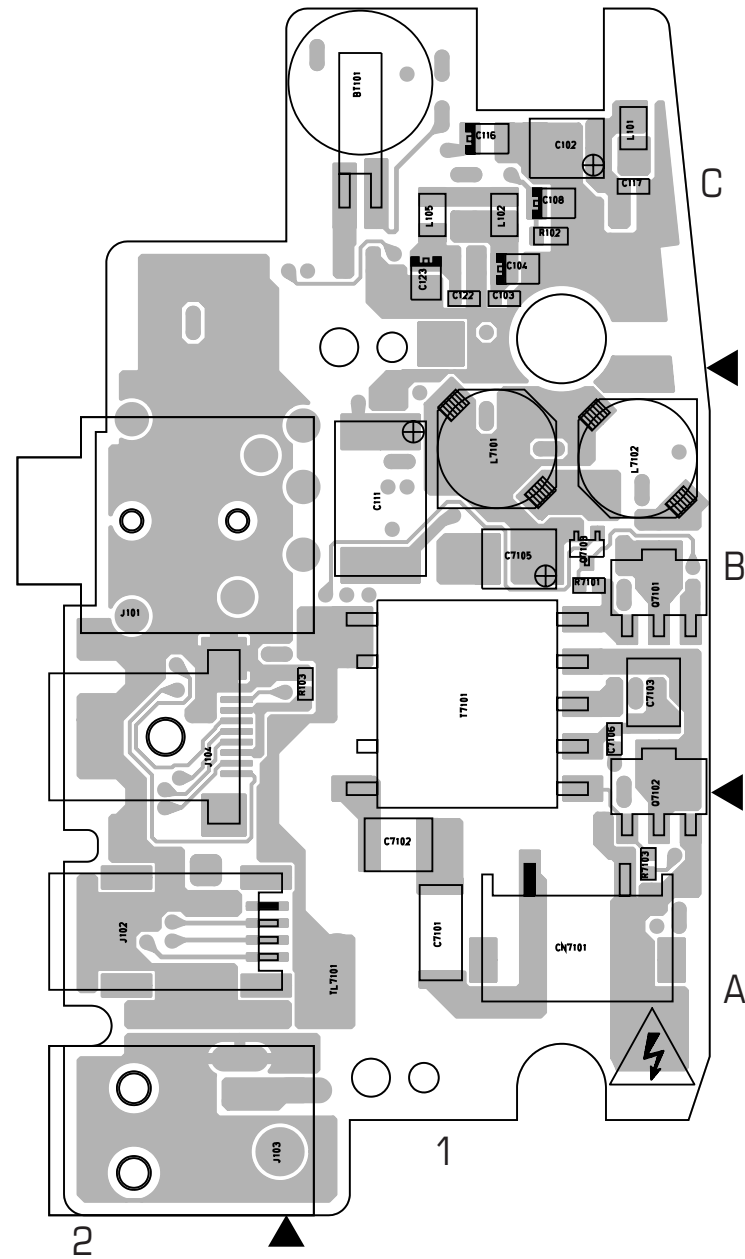


COMPONENT PARTS LOCATION GUIDE <JACK> YB10283-01-02

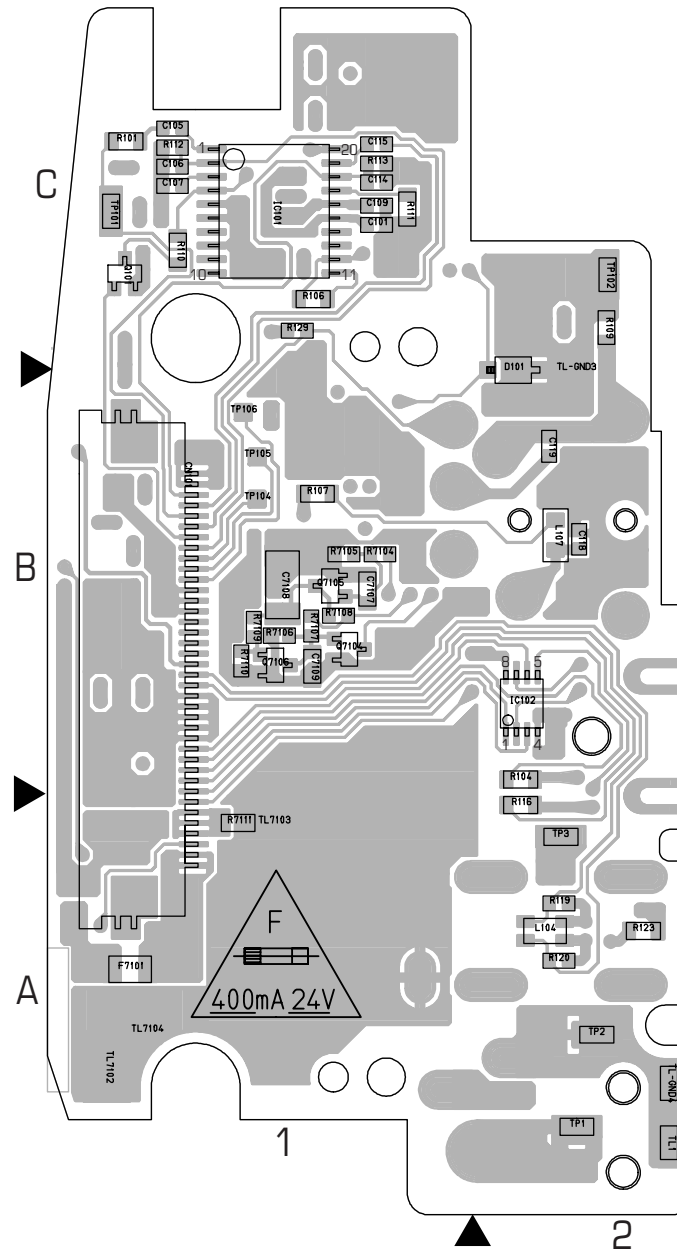
REF.NO.	LOCATION	REF.NO.	LOCATION	REF.NO.	LOCATION
CAPACITOR		COIL		R7104	B C 1B
C101	B C 1C	L101	A C 1C	R7105	B C 1B
C102	A C 1C	L102	A C 1C	R7106	B C 1B
C103	A C 1C	L104	B C 2A	R7107	B C 1B
C104	A C 1C	L105	A C 1C	R7108	B C 1B
C105	B C 1C	L107	B C 2B	R7109	B C 1B
C106	B C 1C	L7101	A C 1B	R7110	B C 1B
C107	B C 1C	L7102	A C 1B	R7111	B C 1A
C108	A C 1C	TRANSISTOR		TEST POINT	
C109	B C 1C	Q101	B C 1C	TP1	B C 2A
C111	A C 1B	Q7101	A C 1B	TP101	B C 1C
C114	B C 1C	Q7102	A C 1B	TP102	B C 2C
C115	B C 1C	Q7103	A C 1B	TP104	B C 1B
C116	A C 1C	Q7104	B C 1B	TP105	B C 1B
C117	A C 1C	Q7105	B C 1B	TP106	B C 1B
C118	B C 2B	Q7106	B C 1B	TP2	B C 2A
C119	B C 2B	RESISTOR		TP3	B C 2A
C122	A C 1C	R101	B C 1C	OTHER	
C123	A C 1C	R102	A C 1C	BT101	A C 1C
C7101	A C 1A	R103	A C 1B	F7101	B C 1A
C7102	A C 1A	R104	B C 2B	J101	A D 2B
C7103	A C 1B	R106	B C 1C	J102	A C 2A
C7105	A C 1B	R107	B C 1B	J103	A D 2A
C7106	A C 1B	R109	B C 2C	J104	A C 2B
C7107	B C 1B	R110	B C 1C	PC078	A C 1C
C7108	B C 1B	R111	B C 1C	T7101	A C 1B
C7109	B C 1B	R112	B C 1C	TL-GND3	B C 2B
CONNECTOR		R113	B C 1C	TL1	B C 2A
CN101	B C 1B	R116	B C 2A	TL7101	A D 1A
CN7101	A C 1A	R119	B C 2A	TL7102	B C 1A
DIODE		R120	B C 2A	TL7103	B C 1A
D101	B C 2B	R123	B C 2A	TL7104	B C 1A
IC		R129	B C 1C		
IC101	B C 1C	R7101	A C 1B		
IC102	B C 2B	R7103	A C 1A		

04 JACK PWB YB10283-01-02

COMPONENT SIDE (A)



FOIL SIDE (B)

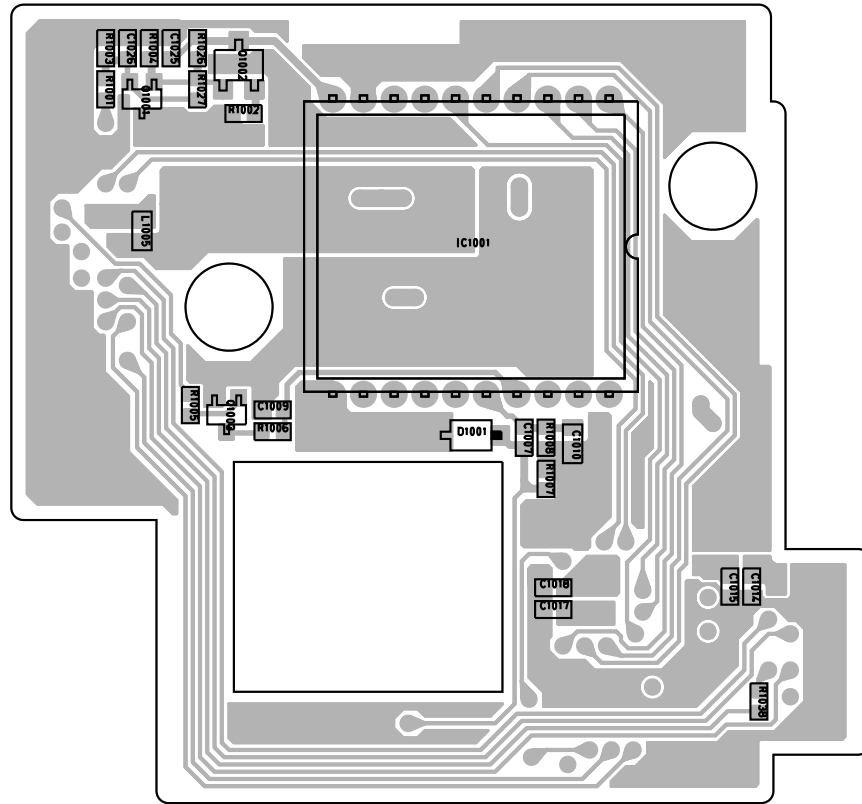


COMPONENT PARTS LOCATION GUIDE <JACK> YB10283-01-04

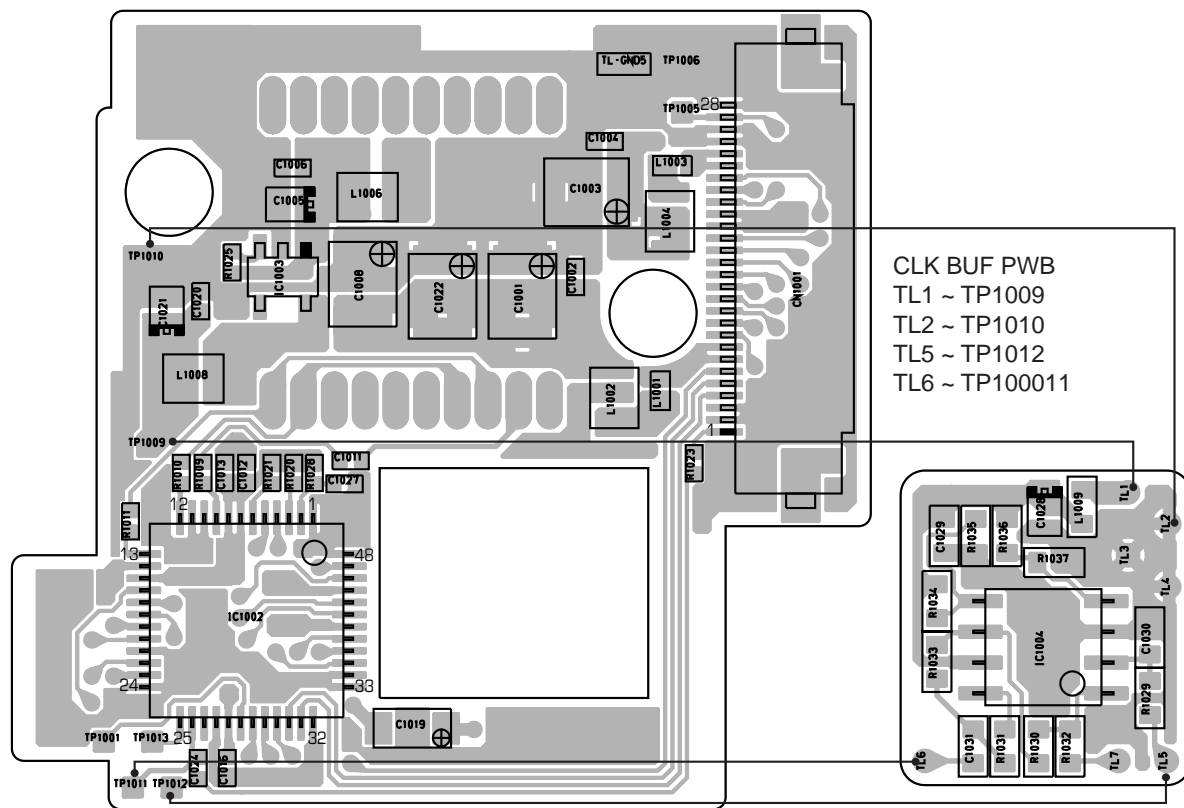
REF.NO.	LOCATION	REF.NO.	LOCATION	REF.NO.	LOCATION
CAPACITOR		COIL		R7105	B C 1B
C101	B C 1C	L101	A C 1C	R7106	B C 1B
C102	A C 1C	L102	A C 1C	R7107	B C 1B
C103	A C 1C	L104	B C 2A	R7108	B C 1B
C104	A C 1C	L105	A C 1C	R7109	B C 1B
C105	B C 1C	L107	B C 2B	R7110	B C 1B
C106	B C 1C	L7101	A C 1B	R7111	B C 1A
C107	B C 1C	L7102	A C 1B	TEST POINT	
C108	A C 1C	TRANSISTOR		TP1	B C 2A
C109	B C 1C	Q101	B C 1C	TP101	B C 1C
C111	A C 1B	Q7101	A C 1B	TP102	B C 2C
C114	B C 1C	Q7102	A C 1B	TP104	B C 1B
C115	B C 1C	Q7103	A C 1B	TP105	B C 1B
C116	A C 1C	Q7104	B C 1B	TP106	B C 1B
C117	A C 1C	Q7105	B C 1B	TP2	B C 2A
C118	B C 2B	Q7106	B C 1B	TP3	B C 2A
C119	B C 2B	RESISTOR		OTHER	
C122	A C 1C	R101	B C 1C	BT101	A C 1C
C123	A C 1C	R102	A C 1C	F7101	B C 1A
C7101	A C 1A	R103	A C 1B	J101	A D 2B
C7102	A C 1A	R104	B C 2B	J102	A C 2A
C7103	A C 1B	R106	B C 1C	J103	A D 2A
C7105	A C 1B	R107	B C 1B	J104	A C 2B
C7106	A C 1B	R109	B C 2C	PC078	A C 1C
C7107	B C 1B	R110	B C 1C	T7101	A C 1B
C7108	B C 1B	R111	B C 1C	TL-GND3	B C 2B
C7109	B C 1B	R112	B C 1C	TL-GND4	B C 2A
CONNECTOR		R113	B C 1C	TL1	B C 2A
CN101	B C 1B	R116	B C 2A	TL7101	A D 1A
CN7101	A C 1A	R119	B C 2A	TL7102	B C 1A
DIODE		R120	B C 2A	TL7103	B C 1A
D101	B C 2B	R129	B C 1C	TL7104	B C 1A
IC		R7101	A C 1B		
IC101	B C 1C	R7103	A C 1A		
IC102	B C 2B	R7104	B C 1B		

04 JACK PWB YB10283-01-04

COMPONENT SIDE (A)



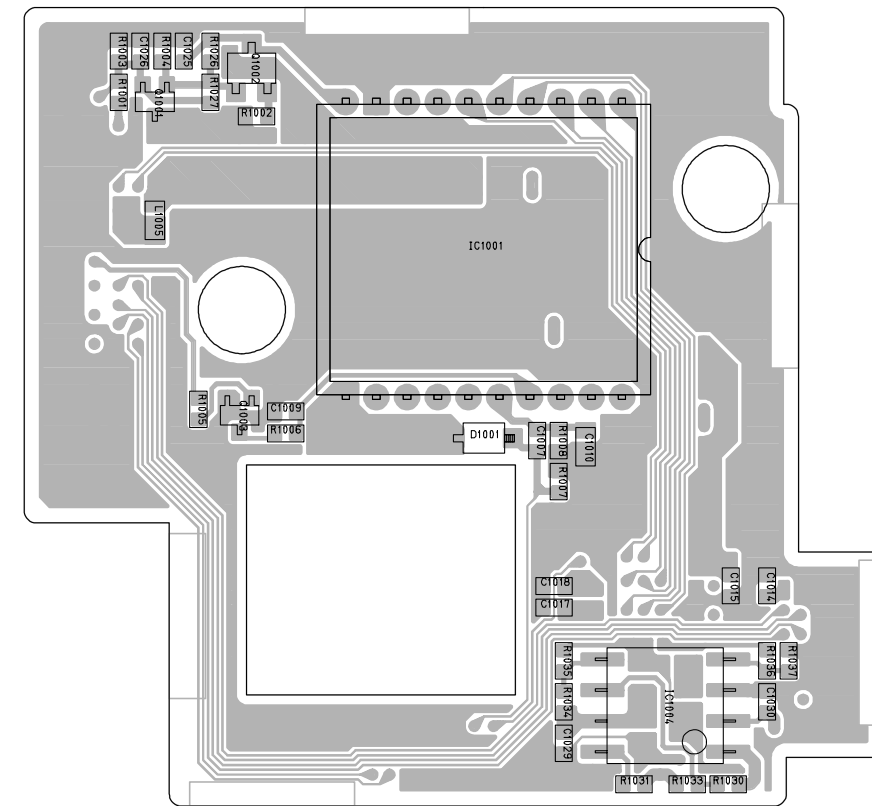
FOIL SIDE (B)



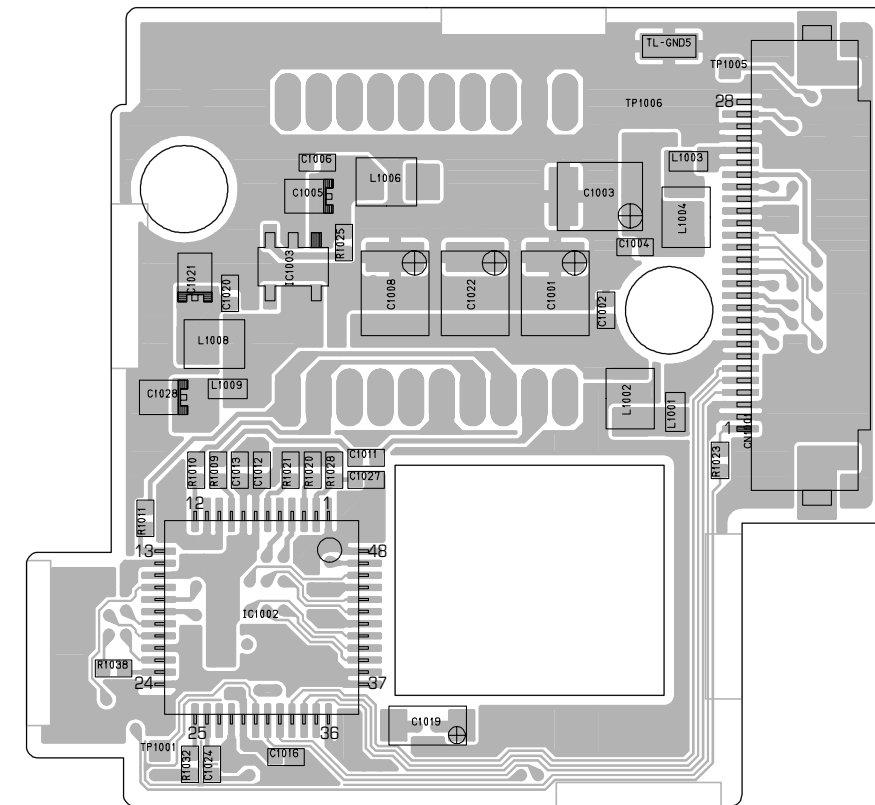
CLK BUF PWB
 TL1 ~ TP1009
 TL2 ~ TP1010
 TL5 ~ TP1012
 TL6 ~ TP10011

02 CCD PWB YB10283-01-02

COMPONENT SIDE (A)

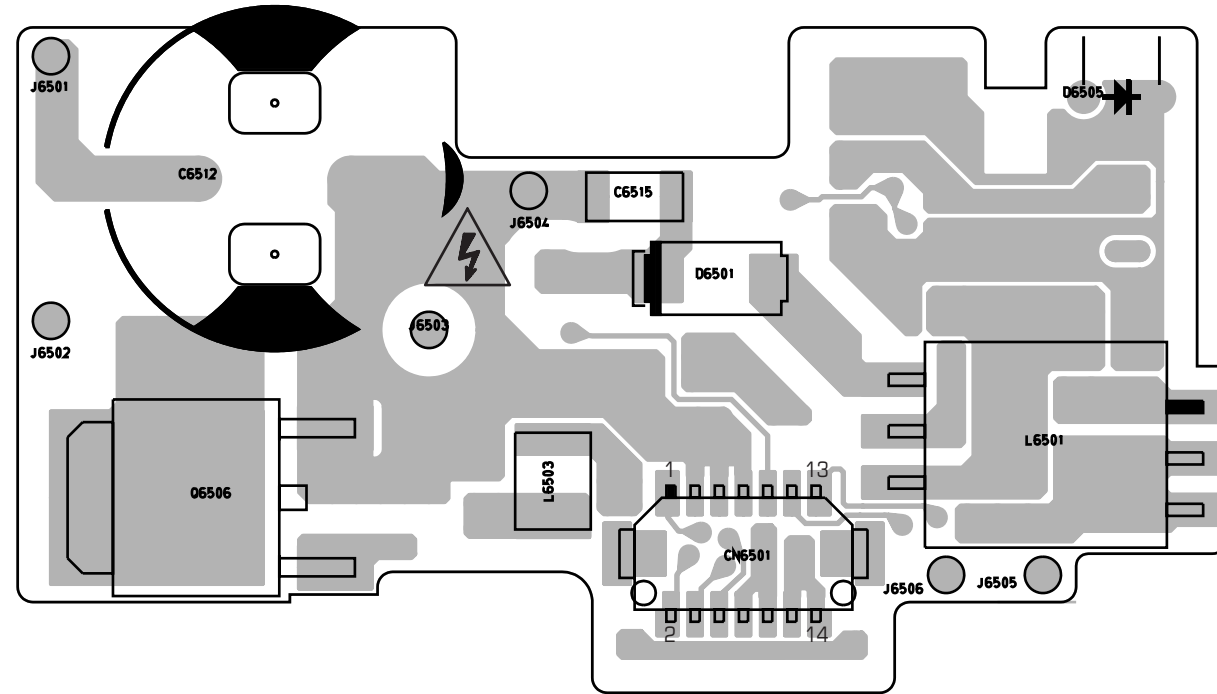


FOIL SIDE (B)

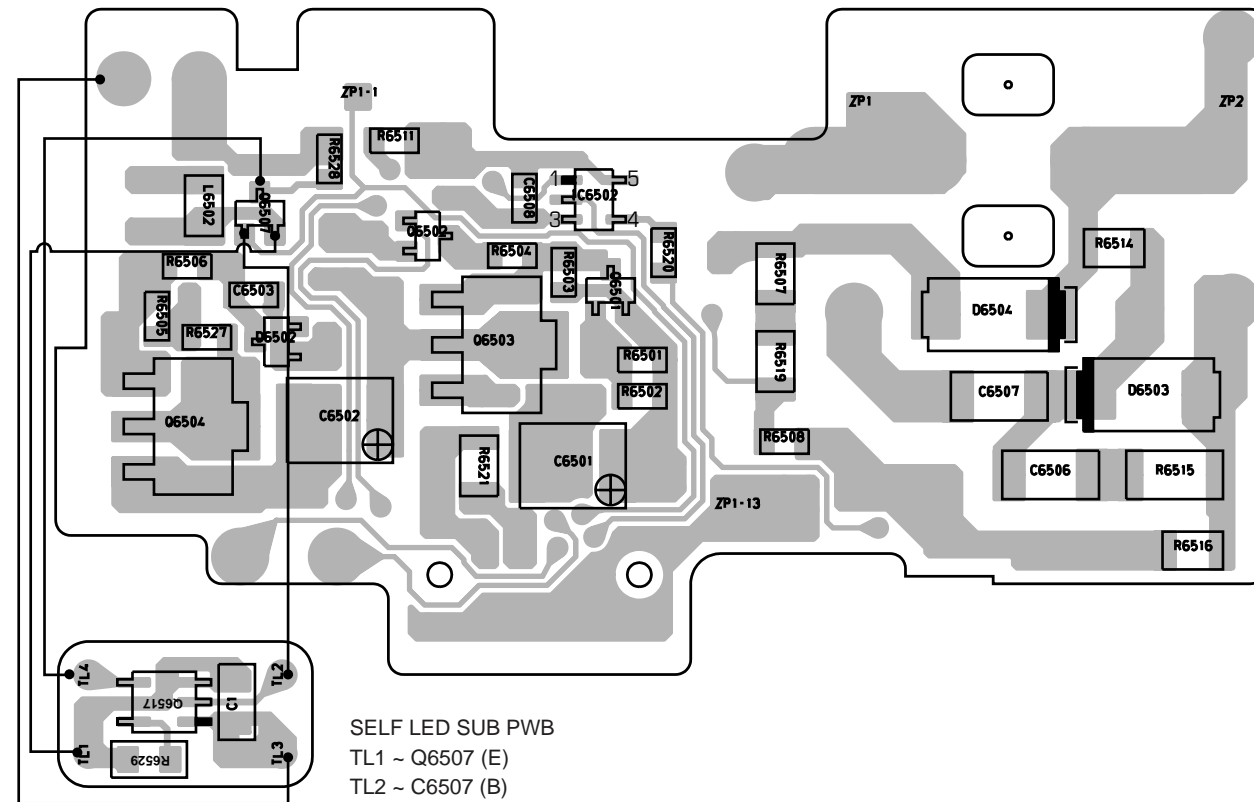


02 CCD PWB YB10283-01-04

COMPONENT SIDE (A)



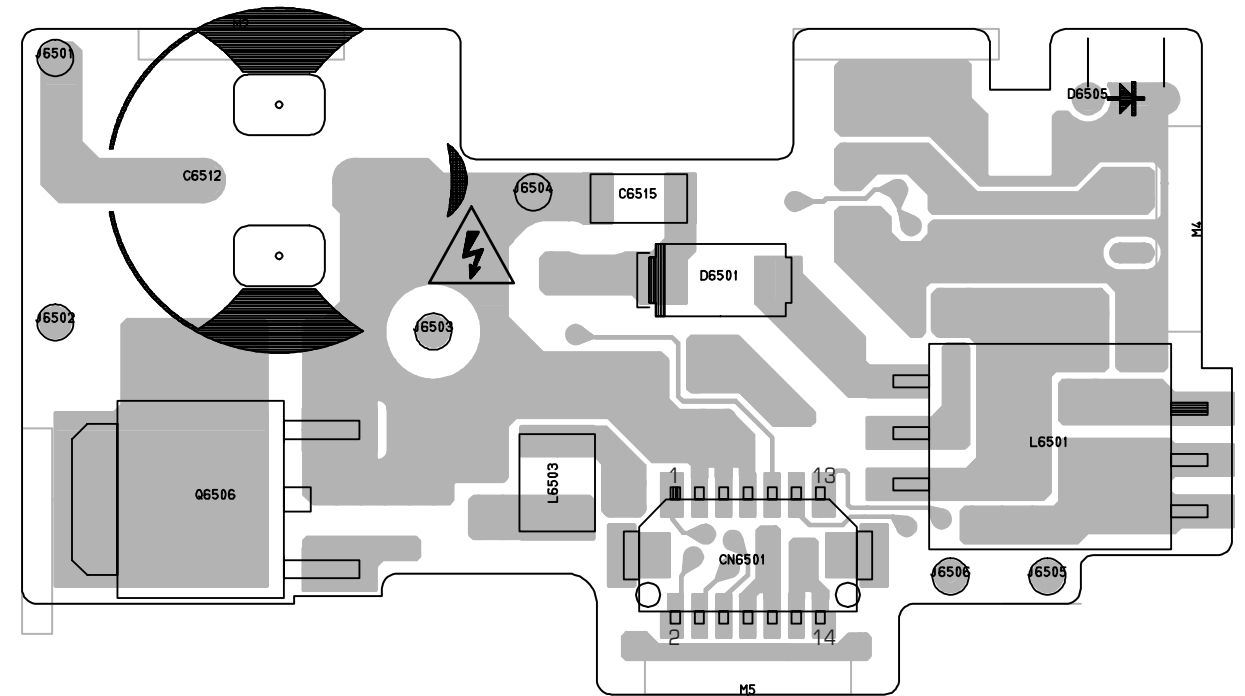
FOIL SIDE (B)



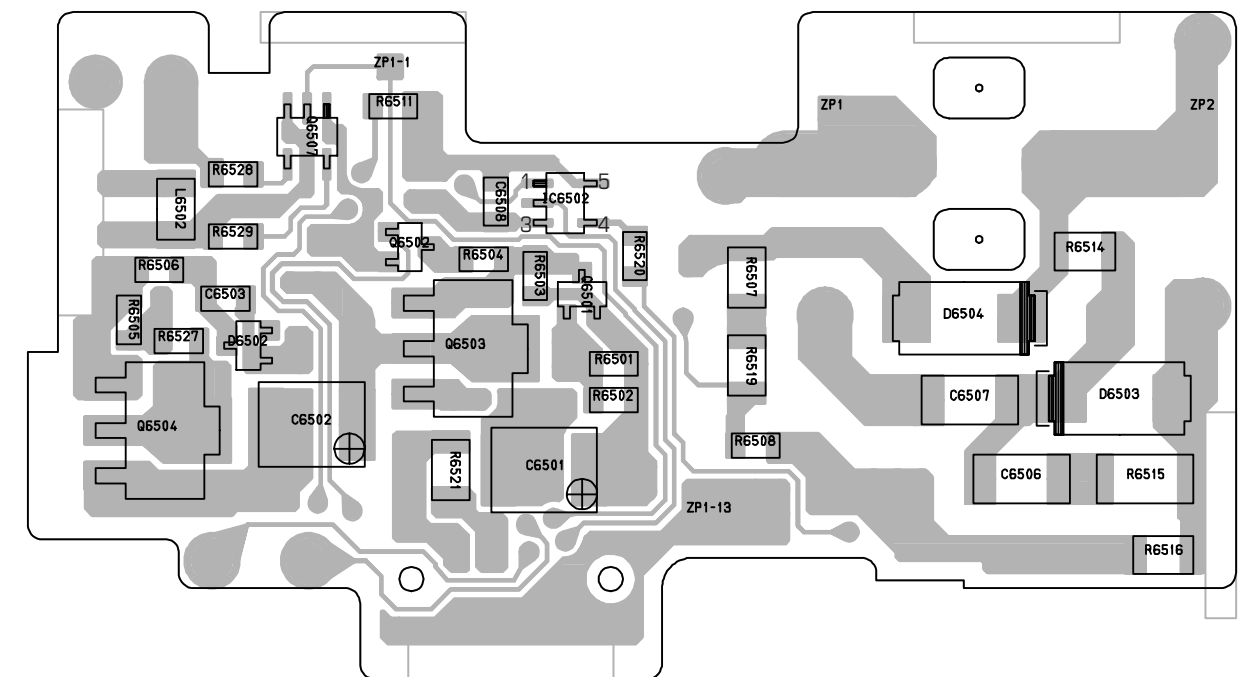
SELF LED SUB PWB
 TL1 ~ Q6507 (E)
 TL2 ~ C6507 (B)
 TL3 ~ D6505
 TL4 ~ Q6507 (E)

STROBE FLASH PWB YB10282-01-02

COMPONENT SIDE (A)

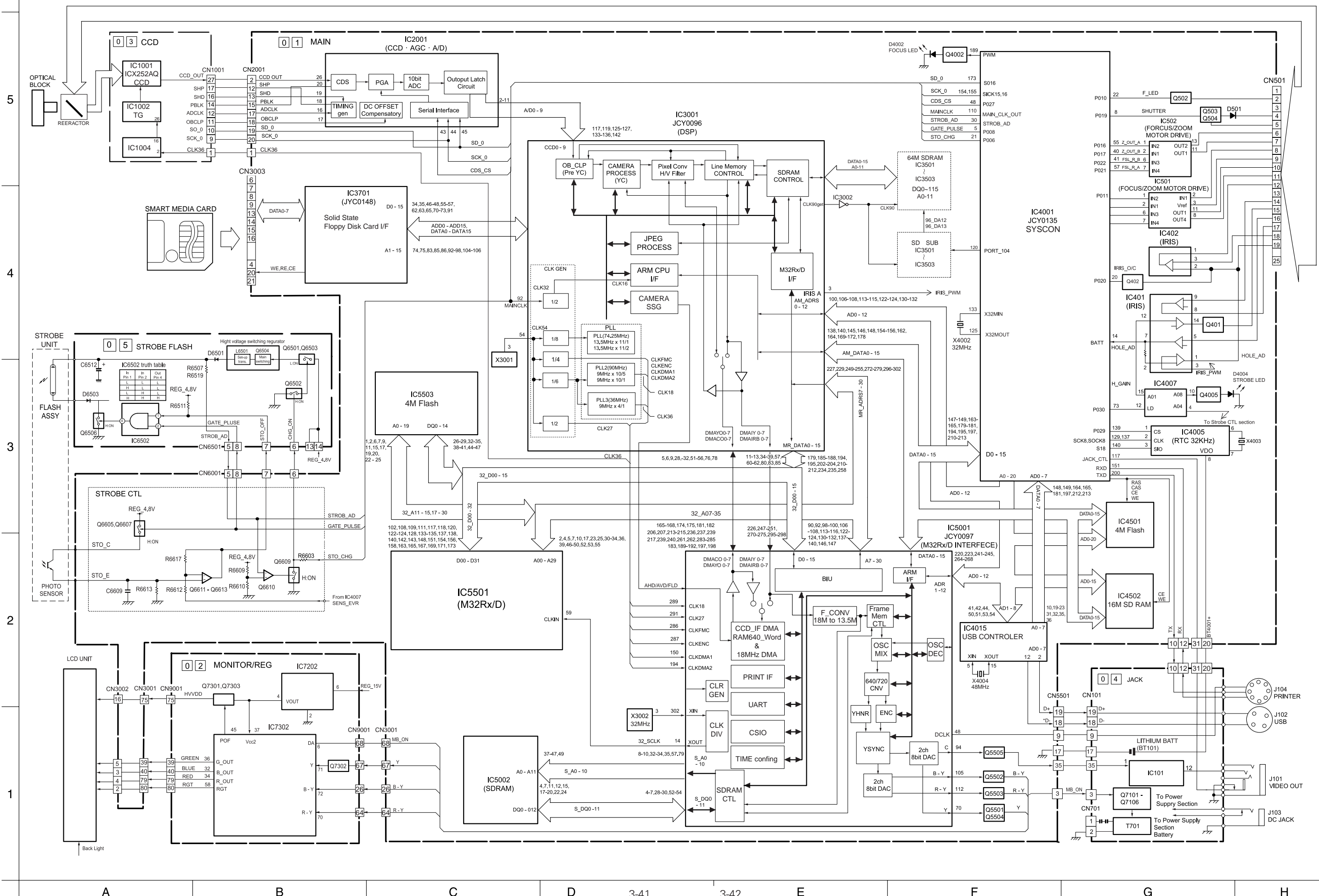


FOIL SIDE (B)



STROBE FLASH PWB YB10282-01-04

3.23 OVER ALL BLOCK DIAGRAM



3.24 POWER SUPPLY BLOCK DIAGRAM

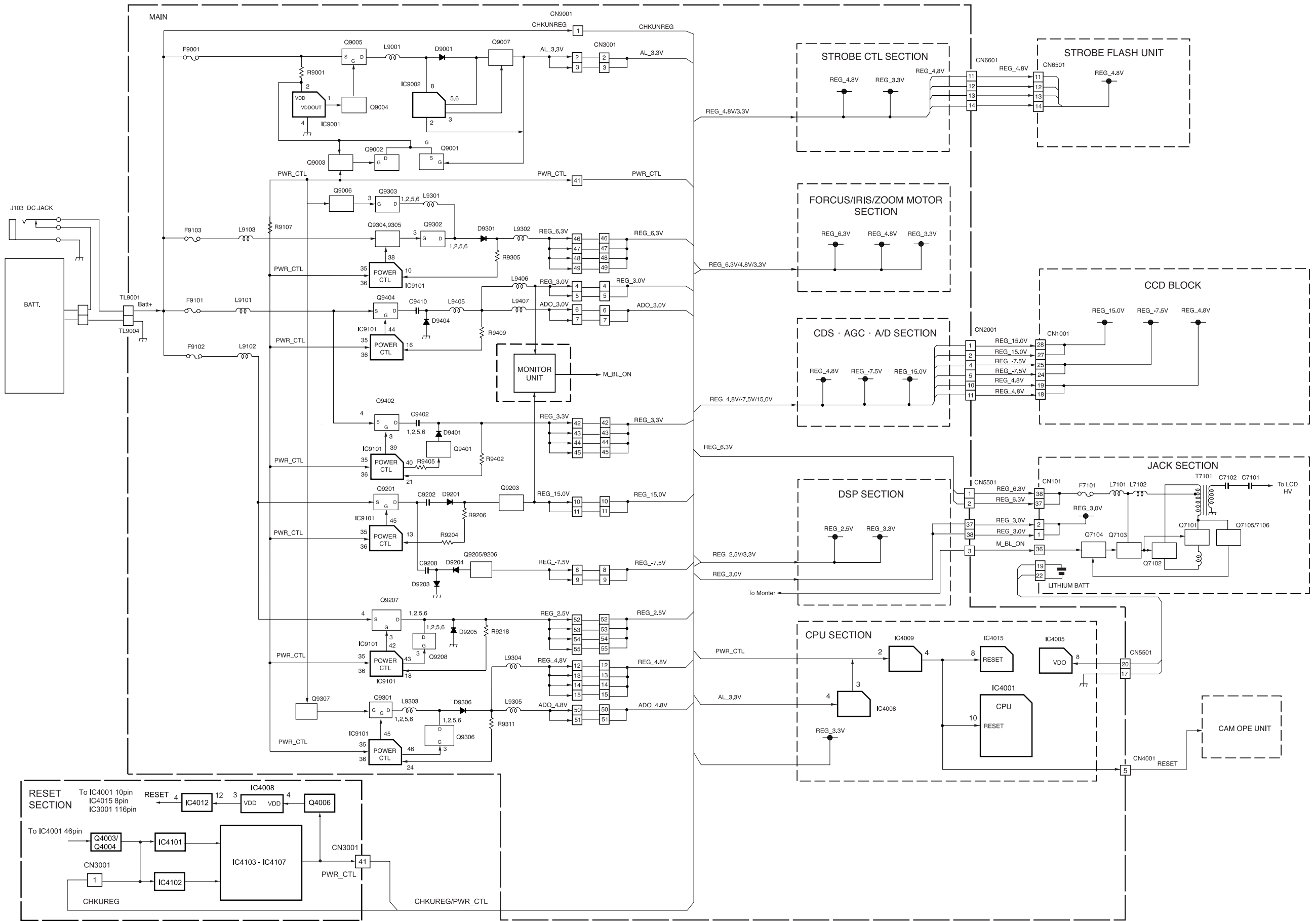
5

4

3

2

1



A

B

C

D 3-43

3-44

E

F

G

H

